

WHITE  SHELL



## *Every Shell Hides a Secret*

**White Shell** is the most well-kept secret of the Algarve. This true Eco-friendly Resort located near Senhora da Rocha is just a short distance from top-notch beaches, golf courses, award-winning restaurants and major attractions of the Algarve. The international airport is 45 minutes away.

**White Shell** is a car-free and bike friendly resort with 55 apartments designed by Saraiva + Associados Architects, with a contemporary design yet featuring traditional elements of the region.

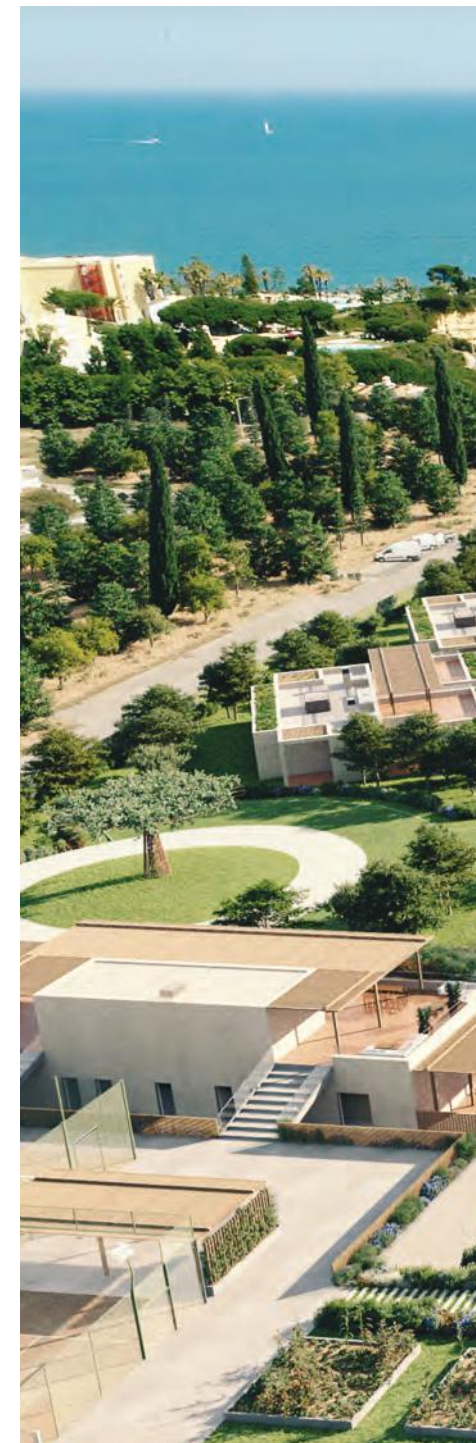
Outside, extensive green areas and luxurious amenities – indoor/outdoor swimming pools, multisport fields, paddle-tennis court, Spa with gym, reception/concierge services – provide the highest level of comfort, privacy and leisure. All this, inspired by a high environmental sustainability, responsibility and concern.

## *Todas as Conchas Guardam um Segredo*

**White Shell** é o segredo mais bem guardado do Algarve. Este verdadeiro Eco-friendly Resort localizado na Senhora da Rocha, fica a uma curta distância das melhores praias, campos de golfe, restaurantes galardoados e principais atrações do Algarve. O aeroporto internacional fica a apenas 45 minutos.

O **White Shell** é um aldeamento sem carros e amigo das bicicletas, composto por 55 apartamentos desenhados pela Saraiva + Associados Arquitectos, de design contemporâneo, mas integrando materiais tradicionais da região.

No exterior, extensas áreas verdes e instalações comuns de luxo – piscinas exteriores e interiores, campos polidesportivos, campo de padel, Spa com ginásio, serviços de recepção e concierge – oferecem o máximo nível de conforto, privacidade e lazer. Tudo isto, inspirado por uma sustentabilidade, responsabilidade e preocupação ambiental.









*The Atlantic as Your Background*  
*O Atlântico como Cenário*

















*Living is an Art, this is Your Stage  
Viver é uma Arte, este é o seu Palco*











WHITE SHELL





*White Shell is more than an Eco-friendly Resort  
It's where sophistication merges with nature*

*White Shell é mais do que um Eco-friendly Resort  
É onde a sofisticação se funde com a natureza*



*Nature Comes First*  
*Em primeiro Lugar, a Natureza*































*Comfort is in the small details*  
*O conforto está nos pequenos detalhes*













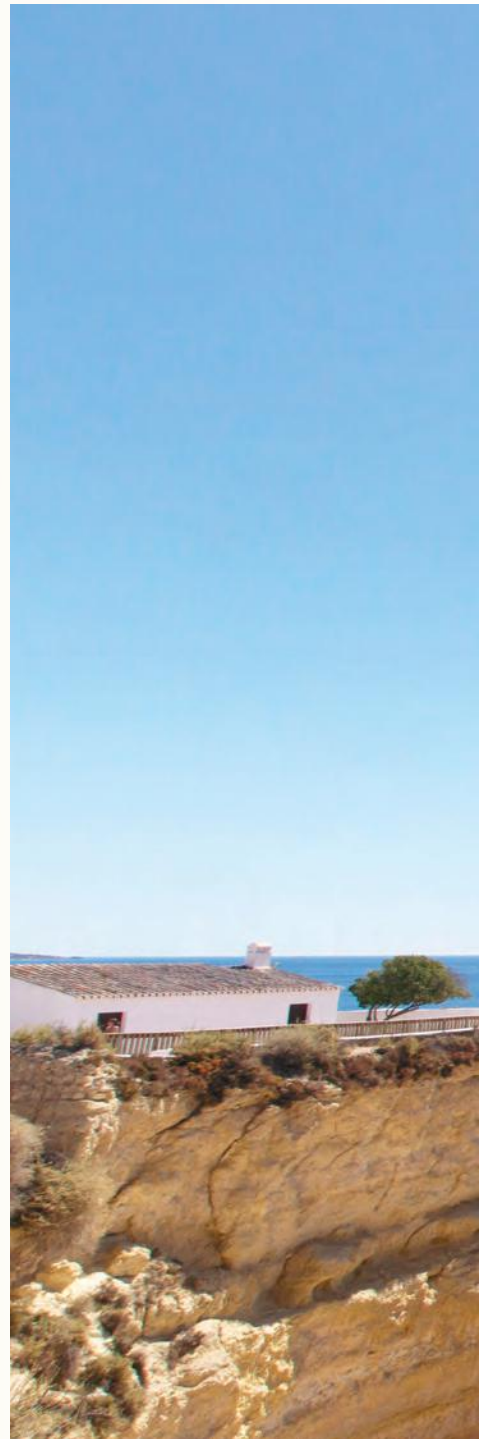
*Dive into Luxury*  
*Mergulhe no Luxo*











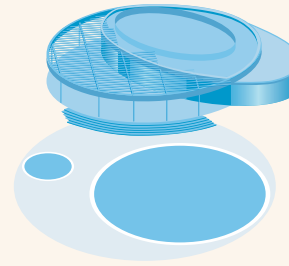






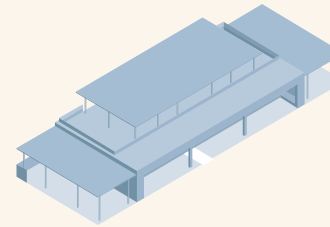
# Features Características

- |                                       |   |  |
|---------------------------------------|---|--|
| 20 Villas – 55 Apartments             |    | 20 Villas – 55 Apartamentos                            |
| 1 – 3 Bedrooms                        |    | T1 a T3  |
| Outdoor and indoor swimming pools     |    | Piscinas exterior e interior                           |
| Health Club   Gym   SPA   Padel Court |    | Health Club   Ginásio   SPA   Campo de Padel           |
| Car-free   Bike-friendly Concept      |    | Resort sem circulação automóvel   Amigo das bicicletas |
| Reception   Concierge services        |  | Serviços de recepção   Concierge                       |
| Parking                               |  | Parque de estacionamento                               |



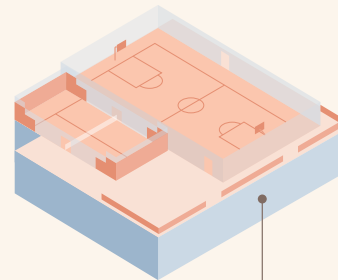
## POOLS & SPA

- SWIMMING POOL
- GYM
- SAUNA
- MASSAGE ROOM
- BAR



## CLUB HOUSE

- BAR
- LIVING AREA
- PLAY AREA
- TERRACE
- LUGGAGE STORAGE
- COFFESHOP
- RECEPTION
- ADMINISTRATION



## SPORTS CENTER

- TENNIS COURT
- SPORTS FIELD

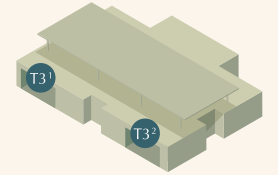
PARKING



## VA VILLA A

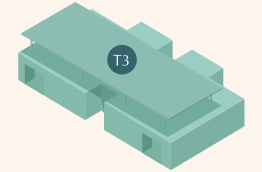
**T3<sup>1</sup>** 3 BEDROOMS | 3 BATHROOMS  
 INTERIOR GROSS AREA: 132,30 m<sup>2</sup>  
 TERRACES AREA: 104,08 m<sup>2</sup>  
 TOTAL AREA: 236,38 m<sup>2</sup>

**T3<sup>2</sup>** 3 BEDROOMS | 3 BATHROOMS  
 INTERIOR GROSS AREA: 132,30 m<sup>2</sup>  
 TERRACES AREA: 104,08 m<sup>2</sup>  
 TOTAL AREA: 236,38 m<sup>2</sup>



## VB VILLA B

**T3** 3 BEDROOMS | 4 BATHROOMS  
 INTERIOR GROSS AREA: 158,40 m<sup>2</sup>  
 TERRACES AREA: 189,41 m<sup>2</sup>  
 TOTAL AREA: 347,81 m<sup>2</sup>



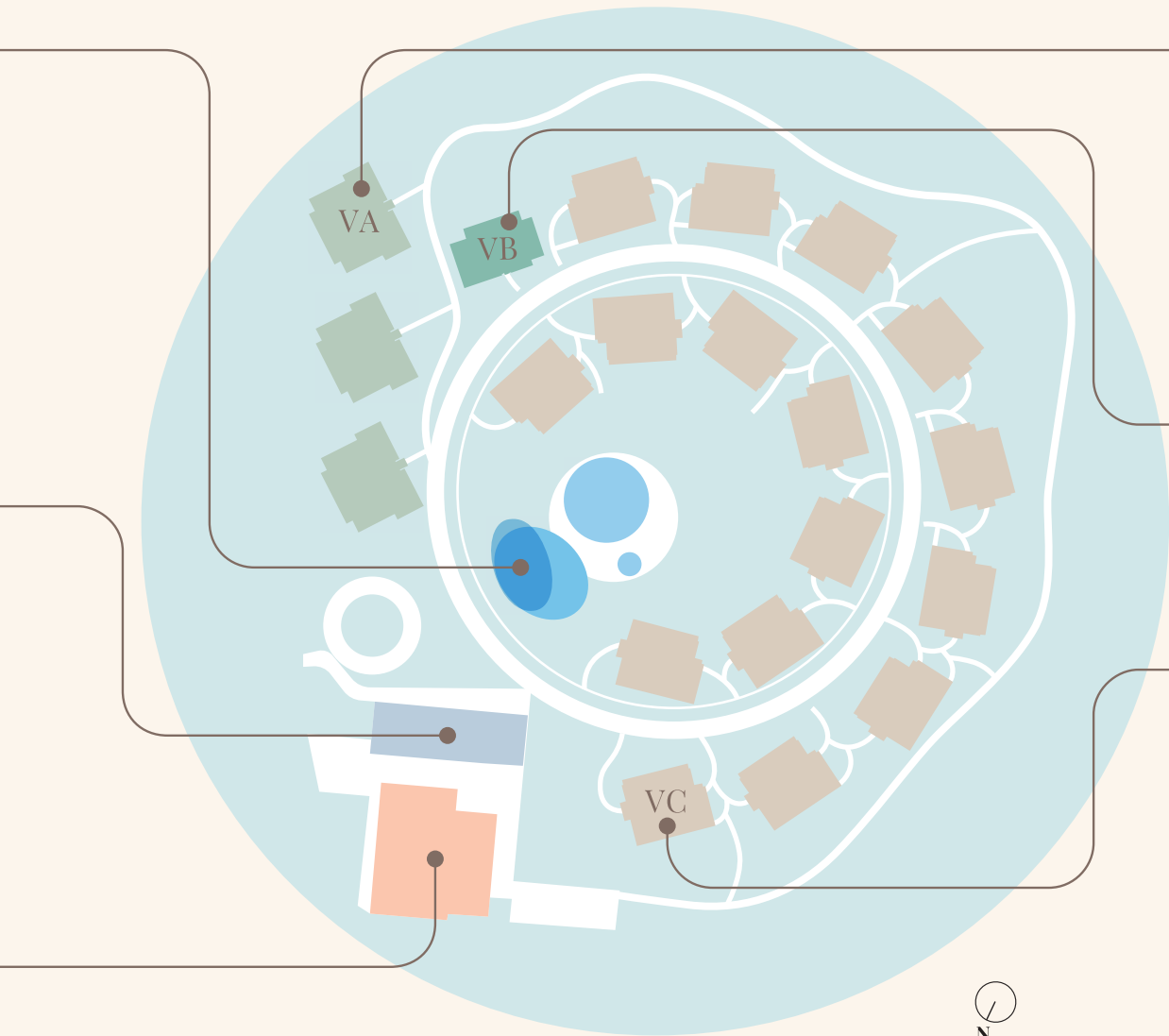
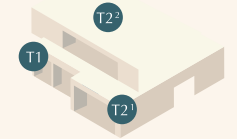
## VC VILLA C

**T1** 1 BEDROOM | 1 BATHROOM  
 INTERIOR GROSS AREA: 73,70 m<sup>2</sup>  
 TERRACES AREA: 34,41 m<sup>2</sup>  
 TOTAL AREA: 108,11 m<sup>2</sup>

**T2<sup>1</sup>** 2 BEDROOMS | 2 BATHROOMS  
 INTERIOR GROSS AREA: 112,30 m<sup>2</sup>  
 TERRACES AREA: 35,95 m<sup>2</sup>  
 TOTAL AREA: 148,25 m<sup>2</sup>

**T2<sup>2A</sup>** 2 BEDROOMS | 2 BATHROOMS  
 INTERIOR GROSS AREA: 101,52 m<sup>2</sup>  
 TERRACES AREA: 184,89 m<sup>2</sup>  
 TOTAL AREA: 286,41 m<sup>2</sup>

**T2<sup>2B</sup>** 2 BEDROOMS | 2 BATHROOMS  
 INTERIOR GROSS AREA: 101,52 m<sup>2</sup>  
 TERRACES AREA: 134,79 m<sup>2</sup>  
 TOTAL AREA: 236,31 m<sup>2</sup>







**SALES OFFICE**

Estrada Municipal 530  
8400-450 Porches  
Algarve – Portugal  
+351 915 198 456 | +351 282 144 699

**LISBON OFFICE**

Edifício Tivoli Fórum  
Avenida da Liberdade, 180 A/E - 7º  
1250-146 Lisboa – Portugal  
+351 215 814 094

[info@vangproperties.com](mailto:info@vangproperties.com)  
[www.white-shell.pt](http://www.white-shell.pt)

**saraiva+associados**  
ARCHITECTURE + URBAN PLANNING

**ILLUSTRATIONS**

Mads Berg

The information and the images contained in this brochure are indicative and for technical reasons, business or legal matters, may be subject to changes or variations.  
A informação e imagens que constam nesta brochura são meramente indicativas e poderão, por motivos técnicos, comerciais ou legais, serem sujeitas a alterações ou variações.



