

Ally®  
Everyday Partner  
Ostomy Accessories



# Ally® Ostomy Accessories Everyday Partner

Every body shape is different. So is every stoma. The Ally® accessory range is designed to enable an even more personalized care of the individual stoma. Working hand in hand with the stoma bag, Ally® products can help to keep the ostomy appliance securely in place, to reduce leakage problems and to protect and care for the surrounding skin.

Ally® – your partner day by day.



4 Ally® Rings  
Ostomy barrier seal



6 Ally® Wafer Extenders  
Ostomy elastic barrier strips



8 Ally® Paste  
Protective skin barrier paste  
without alcohol



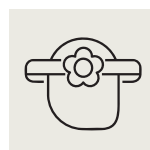
10 Ally® Powder  
Ostomy powder



12 Ally® Adhesive Remover  
Adhesive Remover



13 Ally® Belt  
Ostomy belt



# Ally® Rings



## Ally® Rings

### Ostomy barrier seal

Ally® Rings are designed to create a flatter surface around the stoma by filling the cavities and folds. They are intended to prevent irritation, resolve leakage problems and secure the seal.

Ally® Rings are especially recommended for people who have skin dips or folds around their stoma. The rings are also adapted for people with lower dexterity.

Code	Size	Contents
BB-2022483	48 mm / 3 mm	Box of 10
BB-2022484	48 mm / 4.5 mm	Box of 10
BB-2022983	98 mm / 3 mm	Box of 10



# How to use



Ensure the skin around the stoma is clean and dry.

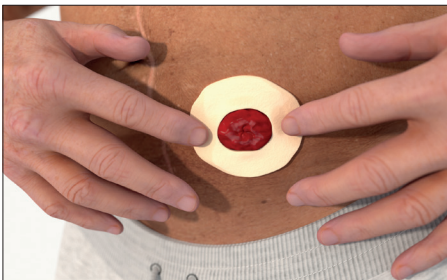


Remove the release paper.

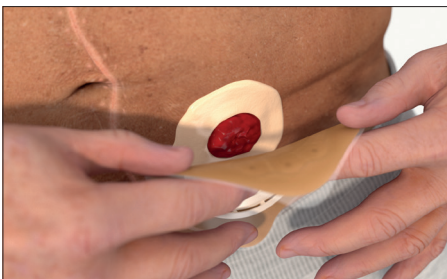
Adapted for low dexterity:  
release paper easy to remove  
because of its offset tabs.



Mould the ostomy ring by gently  
teasing and stretching it into shape  
to suit your body.



Place the ring around your stoma.  
Smooth gently with wet fingers if  
you need to adjust the shape of the  
ring and for better adhesion to the  
skin. Flatten the outer edge of the  
seal.



Place the stoma pouch over the  
seal, align the centre of the wafer  
with the centre of the ring to  
ensure a good fit.

Please read the instructions for use carefully before using the product.

# Ally® Wafer Extenders



## Ally® Wafer Extenders Ostomy elastic barrier strips

Ally® Wafer Extenders are intended to reinforce adhesivity and keep the wafer securely in place for a longer wear-time. They are designed to follow body contours and movements.

Ally® Wafer Extenders are especially recommended for people with stoma who have peristomal hernias, stomas that are prolapsed or in a difficult position, skin dips or bony prominences.

Code	Size	Contents
BB-2022300	80 mm	Box of 20

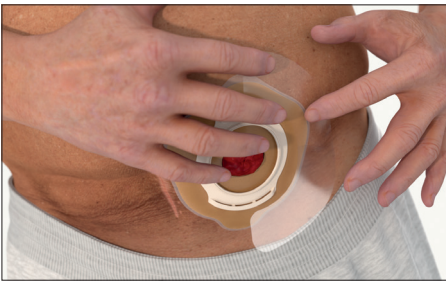
# How to use



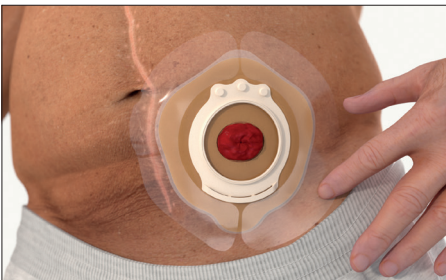
Ensure the skin around the stoma is clean and dry.



Remove half of the protective film.



Apply the wafer extender to the skin, overlapping the edge of the wafer. The wafer extender should overlap the edges of the wafer by at least one centimetre.



Remove the remaining protective film and smooth down to aid adhesion.

Proceed the same way on the other side.

Please read the instructions for use carefully before using the product.

# Ally® Paste



## Ally® Paste

Protective skin barrier paste without alcohol

Ally® Paste is intended to fill in folds and creases in the intact skin around the stoma. It is designed to reduce the risk of leakage, protect the skin from effluent and may help to extend the wear-time.

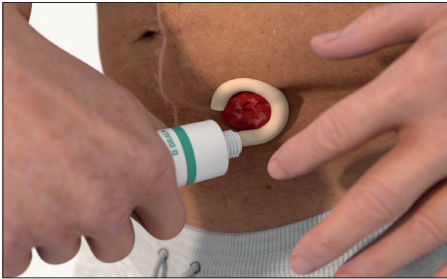
Ally® Paste is especially recommended for people who have skin dips or folds around their stoma.

Code	Size	Contents
BB-2022200	80 gm	1 each

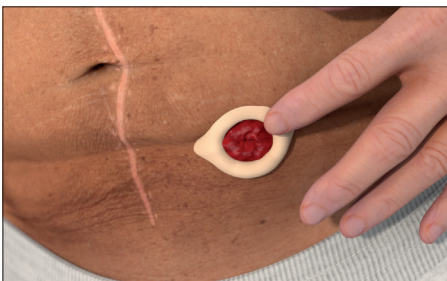
# How to use



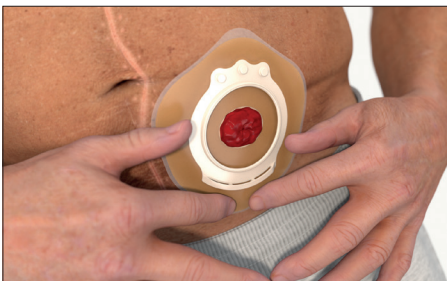
Ensure the skin around the stoma is clean and dry.



Apply the paste directly from the tube onto the skin. It can also be applied directly onto the wafer. Do not apply paste on the entire adhesive area.



If needed, smooth the paste using moistened finger, swabs or tissue.



After applying the wafer, ensure a good fit around the stoma by pressing the wafer with your fingers. Remove the residual paste on the tube with a clean tissue. Recap the tube tightly to prevent contact with moisture.



Use the tube squeezer to easily empty the tube.

Please read the instructions for use carefully before using the product.

# Ally® Powder



## Ally® Powder

### Ostomy powder

Ally® Powder is designed to absorb moisture on the peristomal skin around the stoma to keep it dry. It is intended to protect the skin, reduce irritation and allow better stoma bag adhesion. The powder can promote the healing processes of irritated skin.

Ally® Powder is especially recommended for people with stoma who have reddened, sore or irritated skin.

Code	Size	Contents
BB-2022100	28 gm	1 each

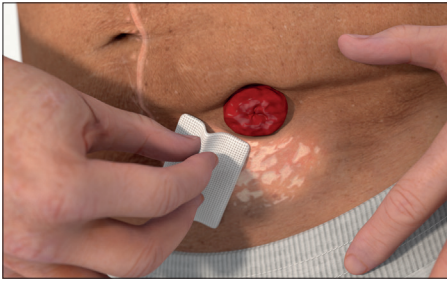
# How to use



Ensure the skin around the stoma is clean and dry.



Unscrew the cap, aim the bottle nozzle at the skin that needs to be taken care of and gently shake the bottle to apply an appropriate amount of powder onto the skin around the stoma.



Spread the powder evenly with a tissue. Remove the excess powder before applying the adhesive wafer of the bag.

Please read the instructions for use carefully before using the product.

# Ally® Adhesive Remover



## Ally® Adhesive Remover

Alcohol free spray that helps to remove your stoma appliance

Ally® Adhesive Remover is alcohol free and does not sting when applied\*. It also helps preserve skin integrity\*.

Made with bag-on-valve technology that allows the canister to be sprayed in any position, used until it is completely empty and stored horizontally without leakage. The propellant is nitrogen, eco-friendly and fully recyclable. The spray is quiet to use and hence discreet.

The outlet has marked with a black dot, making it easy to adjust the direction of spray on the target area.

Code	Size	Contents
BB-2005-1	50 ml	1 each

\*Data on file

# Ally® Belt



## Ally® Belt

### Ostomy belt

Ally® Belt is an added fixation for the stoma bag that provides an extra sense of security.

Ally® Belt is latex-free and convenient to use.

It can be used with Flexima® convex and Flexima Active O' convex one-piece bags and Flexima® 3S wafers. These stoma bags have 3 different attachment positions on each side. Users can select the position they prefer.

Belt length is adjustable between 60 & 120 cm and the width is 3 cm.

Code	Size	Contents
BB-5028	60 – 120 cm	1 each

With nearly 50 years of active involvement in ostomy care, we support ostomates with easy-to-handle ostomy bags and accessories and offer tailored services within a holistic approach.







Contact us for more information on 0800 333 444

These Class I medical devices are in accordance with MDR (EU) 2017/745 and CE self-certified on this basis. Read the instructions on the package insert and the label of each medical device carefully.

**intermed**   
You. Me. Make a difference.

Proudly Distributed By  
**InterMed Medical Limited**  
71 Apollo Drive, Albany, Auckland 0632 | T 0800 333 444  
E [orders@intermed.co.nz](mailto:orders@intermed.co.nz) | W [www.intermed.co.nz](http://www.intermed.co.nz)