



MEADOW
HEIGHTS
PORT COLBORNE

EVERGREEN



ELEVATION C



ELEVATION A

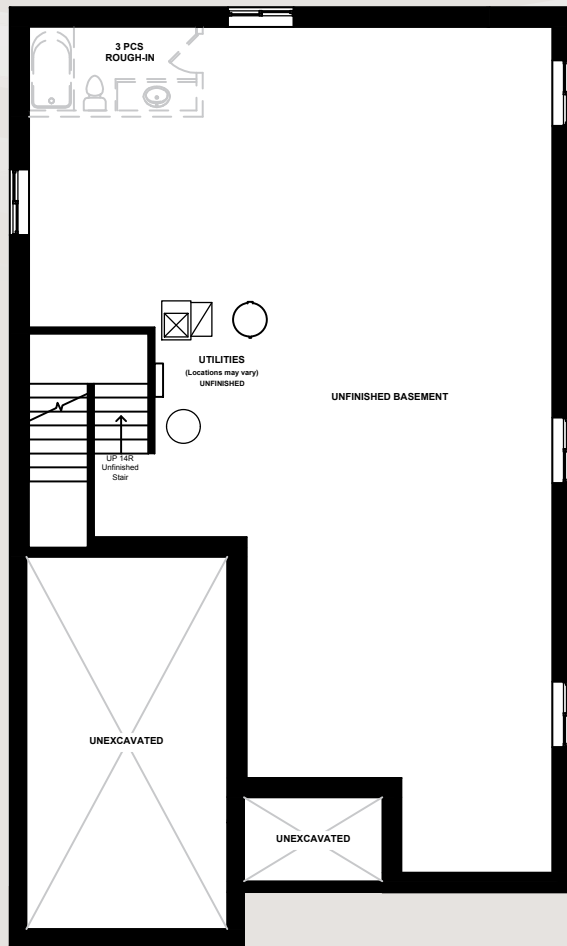


ELEVATION B

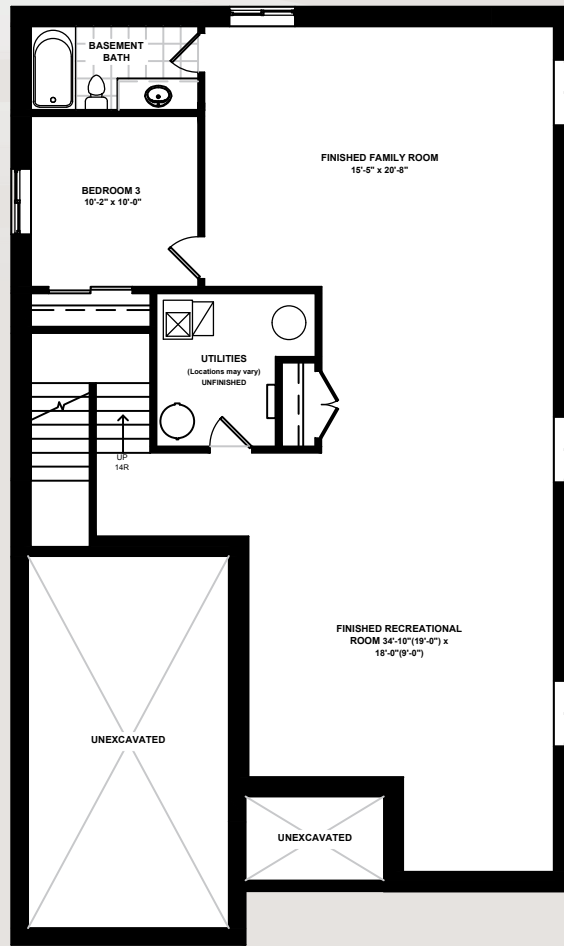
 **DUNSIRE** | EST. 2010
DEVELOPMENTS

www.Dunsire.com

Actual usable floor space may vary from the stated floor area. Plans and elevations are artist's renderings and may contain options which are not standard on all models. Dunsire Homes Inc reserves the right to make changes to these floorplans, specifications, dimensions and elevations without prior notice and without compensation. Stated dimensions and square footages are approximate and should not be used as representation of the home's usable floor space or actual size. Any square footage of a single-family home or a multi-family home that is stated herein is approximate only, may vary from time to time, and remains subject to change without notice or compensation.

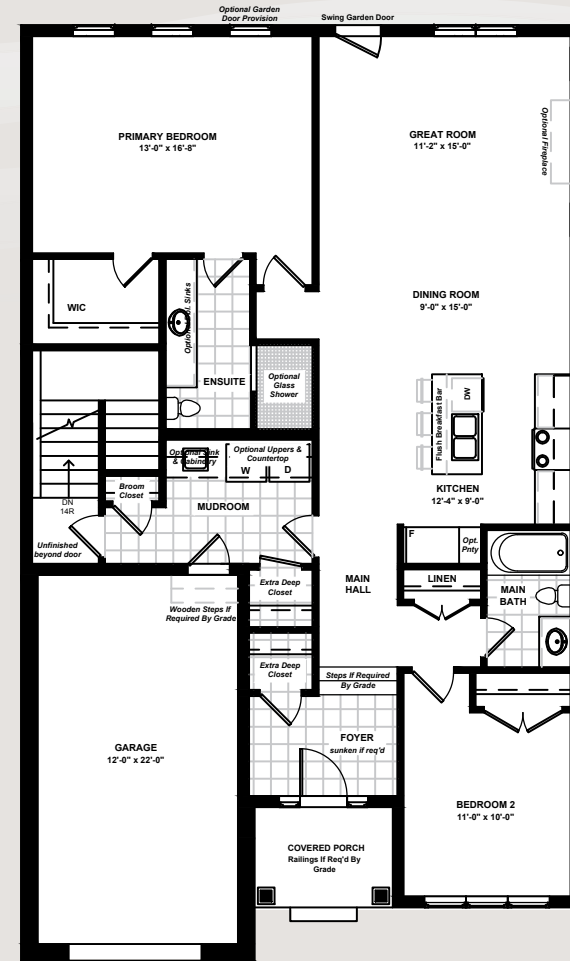


UNFINISHED BASEMENT



FINISHED BASEMENT

1,382 SQ.FT



MAIN FLOOR

1,361 SQ.FT



EVERGREEN

2 Bedrooms
(+ 1 Bedroom)

2 Bathrooms
(+ 1 Bathroom)

1,361 Sq.Ft.
(+ 1,382 Sq.Ft.)

Actual usable floor space may vary from the stated floor area. Plans and elevations are artist's renderings and may contain options which are not standard on all models. Dunsire Homes Inc reserves the right to make changes to these floorplans, specifications, dimensions and elevations without prior notice and without compensation. Stated dimensions and square footages are approximate and should not be used as representation of the home's usable floor space or actual size. Any square footage of a single-family home or a multi-family home that is stated herein is approximate only, may vary from time to time, and remains subject to change without notice or compensation.



www.Dunsire.com



MEADOW
HEIGHTS
PORT COLBORNE

POPLAR



ELEVATION A



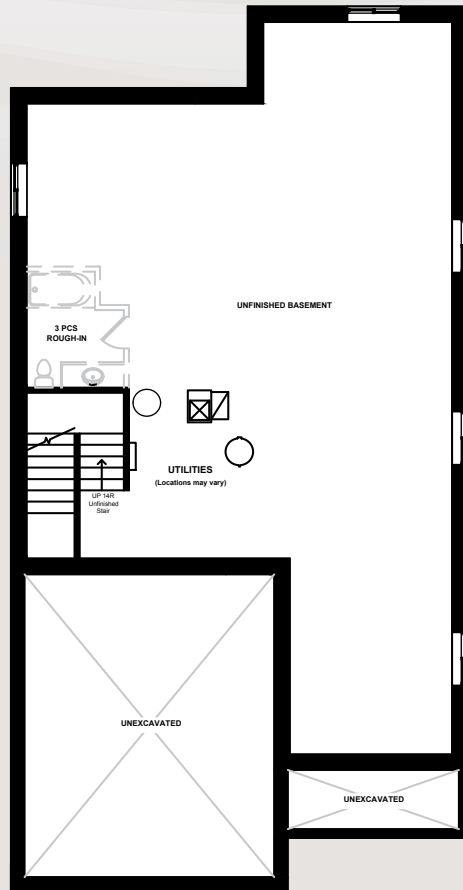
ELEVATION B

ELEVATION C

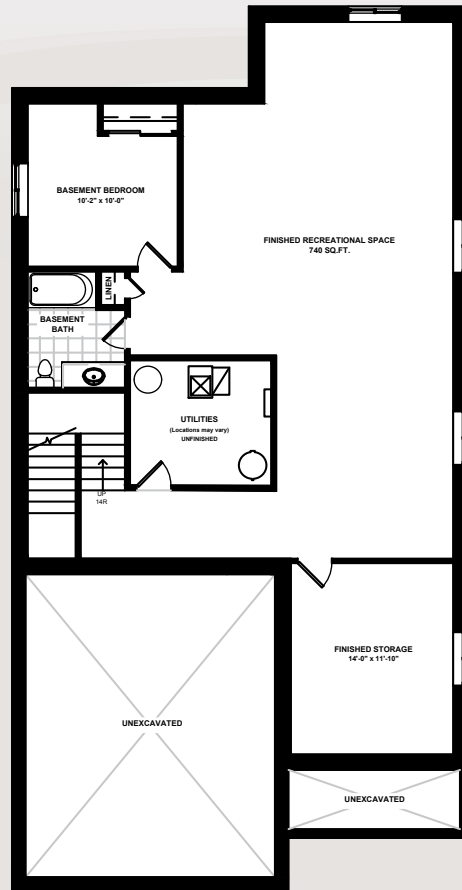
Actual usable floor space may vary from the stated floor area. Plans and elevations are artist's renderings and may contain options which are not standard on all models. Dunsire Homes Inc reserves the right to make changes to these floorplans, specifications, dimensions and elevations without prior notice and without compensation. Stated dimensions and square footages are approximate and should not be used as representation of the home's usable floor space or actual size. Any square footage of a single-family home or a multi-family home that is stated herein is approximate only, may vary from time to time, and remains subject to change without notice or compensation



www.Dunsire.com

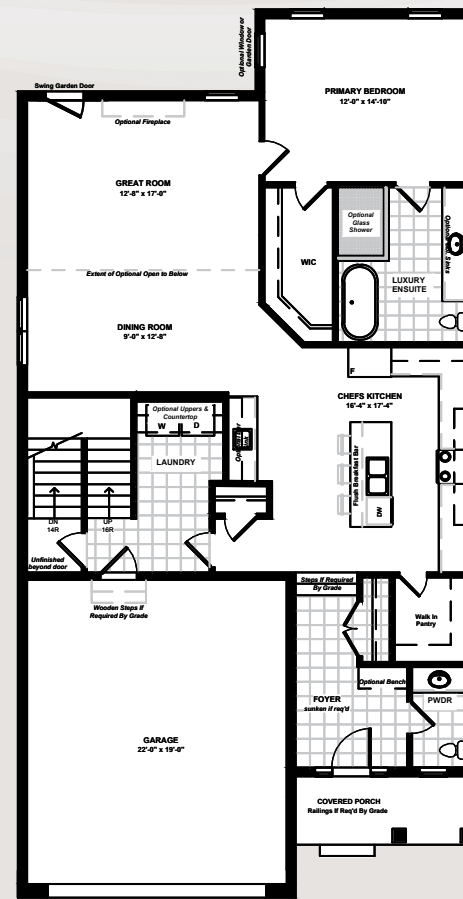


UNFINISHED BASEMENT



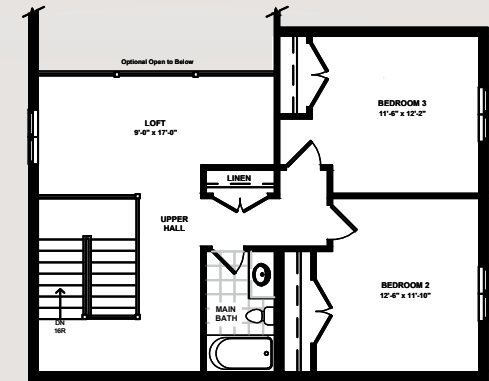
FINISHED BASEMENT

1,400 SQ.FT



MAIN FLOOR

1,424 SQ.FT



LOFT

811 SQ.FT



POPLAR

3 Bedrooms
(+1 Bedroom)

2.5 Bathrooms
(+1 Bathroom)

2,235 Sq.Ft.
(+1,400 Sq.Ft.)

Actual usable floor space may vary from the stated floor area. Plans and elevations are artist's renderings and may contain options which are not standard on all models. Dunsire Homes Inc reserves the right to make changes to these floorplans, specifications, dimensions and elevations without prior notice and without compensation. Stated dimensions and square footages are approximate and should not be used as representation of the home's usable floor space or actual size. Any square footage of a single-family home or a multi-family home that is stated herein is approximate only, may vary from time to time, and remains subject to change without notice or compensation.



www.Dunsire.com



MEADOW
HEIGHTS
PORT COLBORNE



ELEVATION C

Actual usable floor space may vary from the stated floor area. Plans and elevations are artist's renderings and may contain options which are not standard on all models. Dunsire Homes Inc reserves the right to make changes to these floorplans, specifications, dimensions and elevations without prior notice and without compensation. Stated dimensions and square footages are approximate and should not be used as representation of the home's usable floor space or actual size. Any square footage of a single-family home or a multi-family home that is stated herein is approximate only, may vary from time to time, and remains subject to change without notice or compensation.

ASPEN



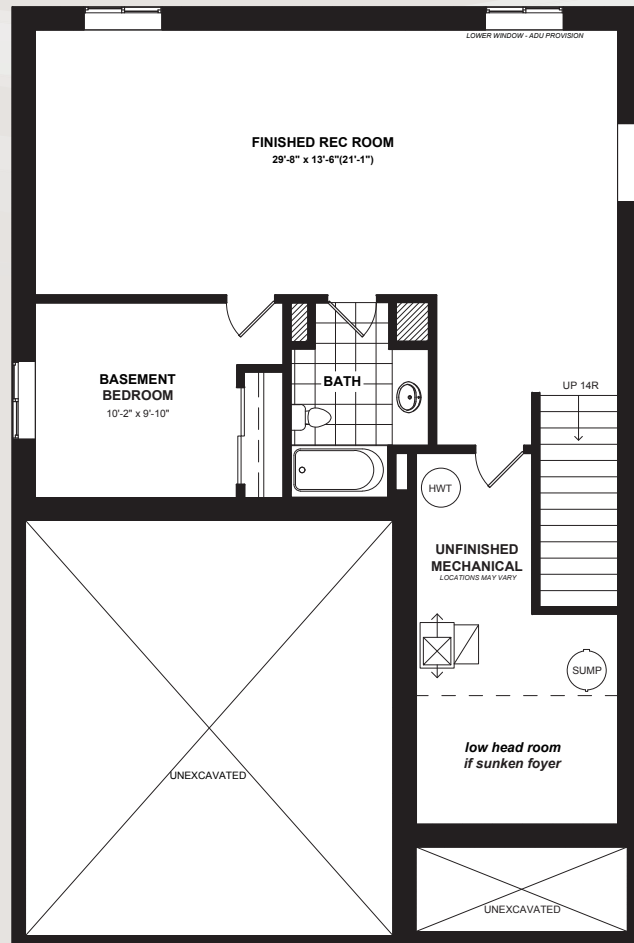
ELEVATION A



ELEVATION B

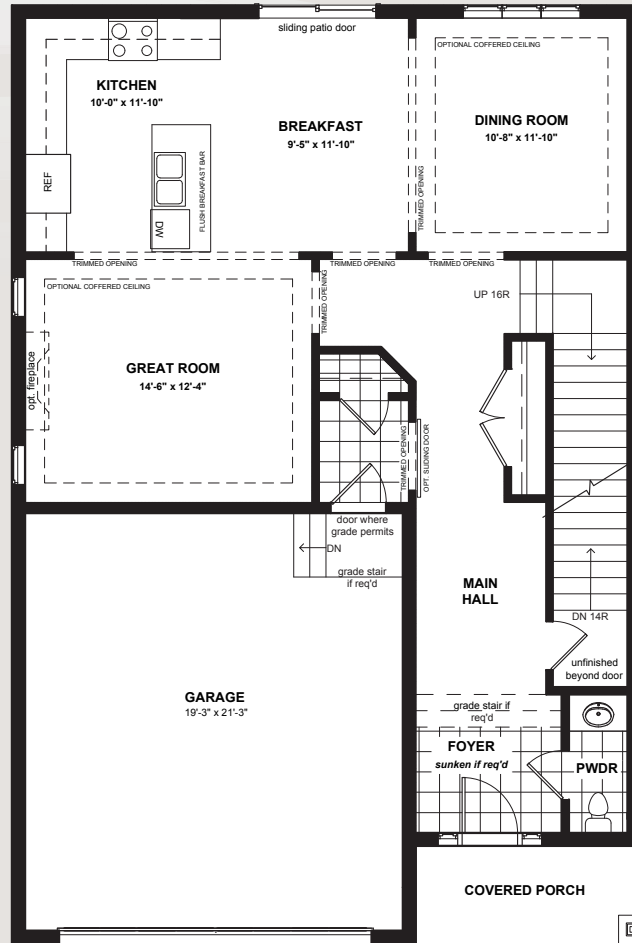
 **DUNSIRE** | EST. 2010
DEVELOPMENTS

www.Dunsire.com



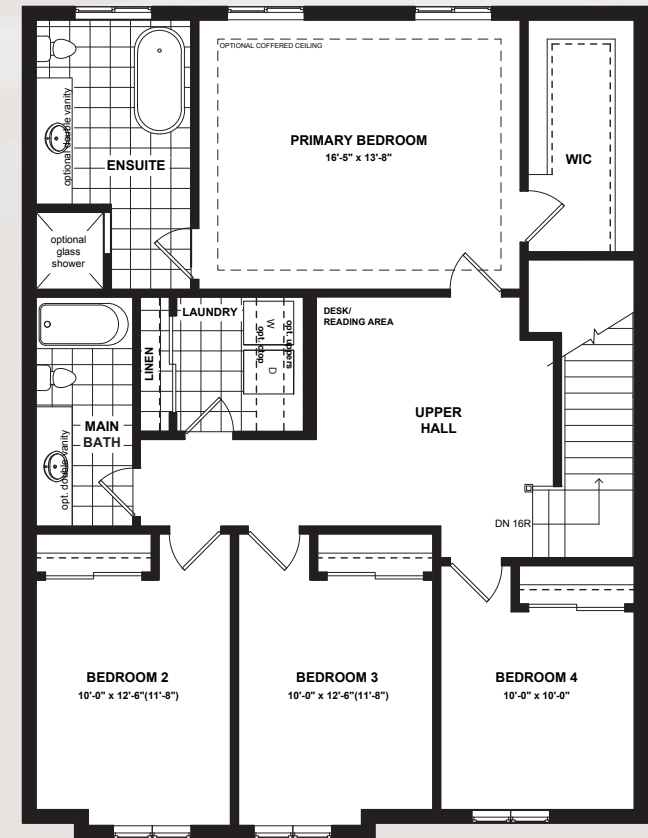
FINISHED BASEMENT

1,076 SQ.FT



MAIN FLOOR

1,026 SQ.FT



SECOND FLOOR

1,365 SQ.FT



ASPEN


5 Bedrooms
(4+1)

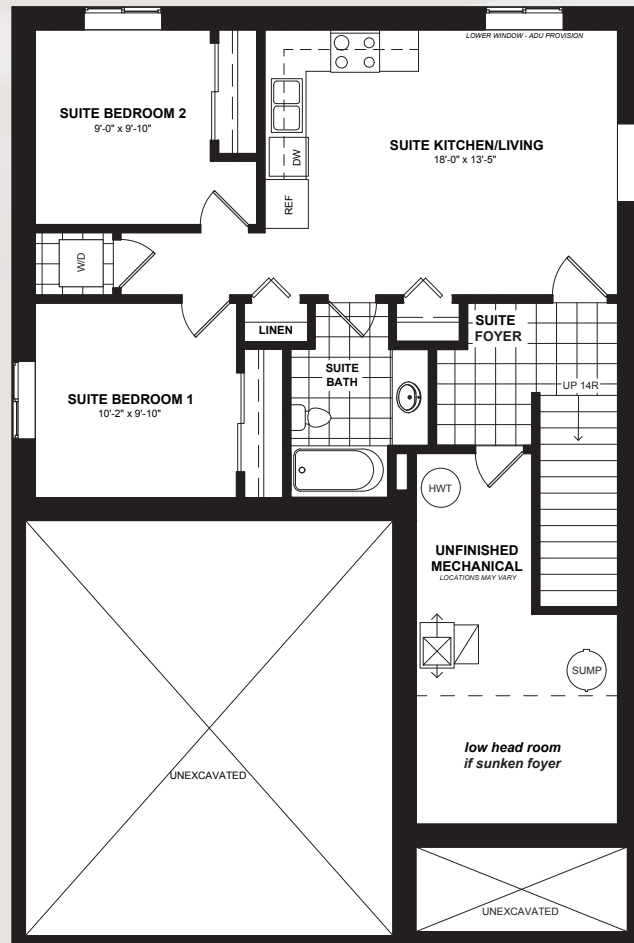

3.5 Bathrooms
(2.5+1)


3,467 Sq.Ft.
(2391+1076)

Actual usable floor space may vary from the stated floor area. Plans and elevations are artist's renderings and may contain options which are not standard on all models. Dunsire Homes Inc reserves the right to make changes to these floorplans, specifications, dimensions and elevations without prior notice and without compensation. Stated dimensions and square footages are approximate and should not be used as representation of the home's usable floor space or actual size. Any square footage of a single-family home or a multi-family home that is stated herein is approximate only, may vary from time to time, and remains subject to change without notice or compensation.

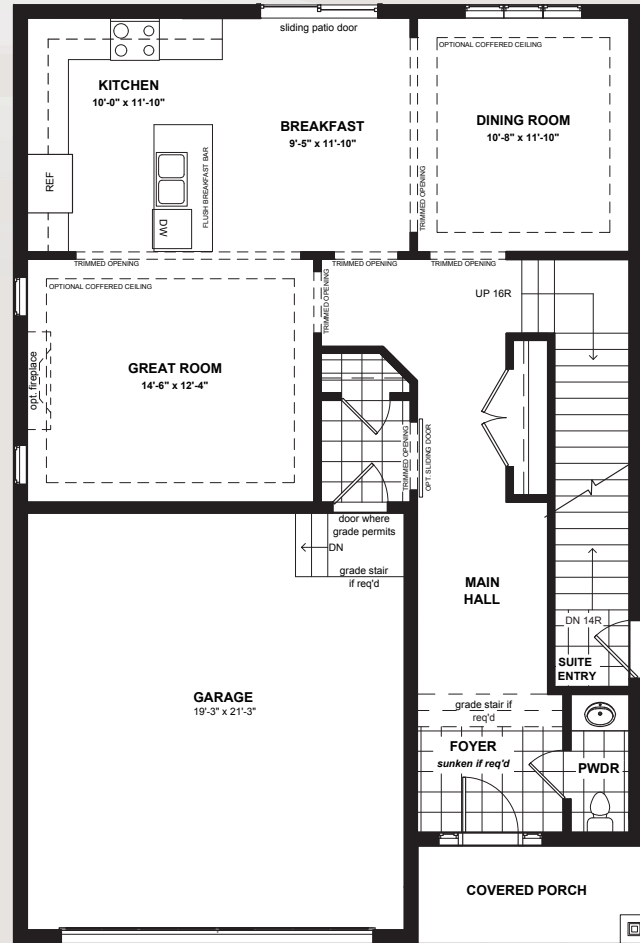


www.Dunsire.com



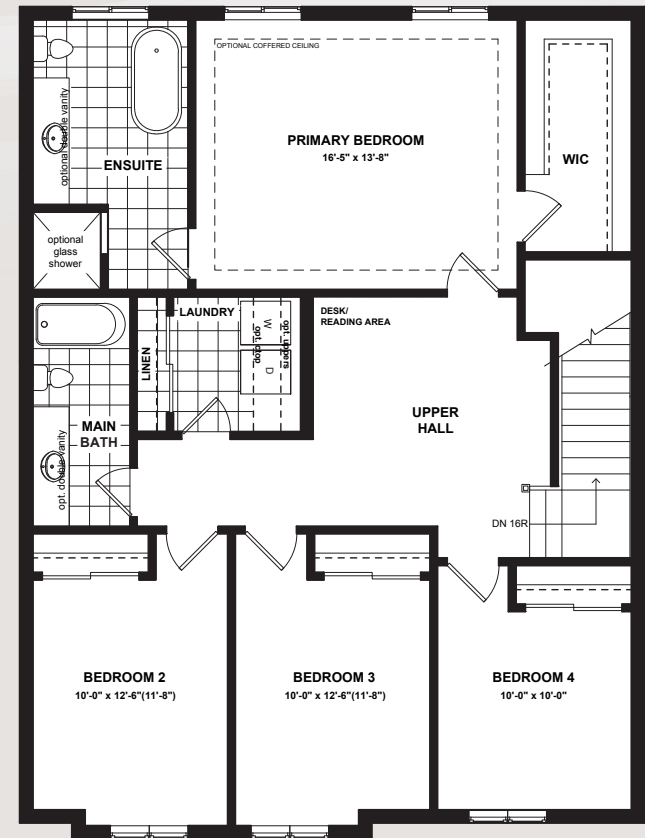
SECONDARY SUITE

1,076 SQ.FT



MAIN FLOOR

1,026 SQ.FT



SECOND FLOOR

1,365 SQ.FT



ASPEN

6 Bedrooms
(4+2)

3.5 Bathrooms
(2.5+1)

3,467 Sq.Ft.
(2391+1076)

Actual usable floor space may vary from the stated floor area. Plans and elevations are artist's renderings and may contain options which are not standard on all models. Dunsire Homes Inc reserves the right to make changes to these floorplans, specifications, dimensions and elevations without prior notice and without compensation. Stated dimensions and square footages are approximate and should not be used as representation of the home's usable floor space or actual size. Any square footage of a single-family home or a multi-family home that is stated herein is approximate only, may vary from time to time, and remains subject to change without notice or compensation.



www.Dunsire.com



MEADOW
HEIGHTS
PORT COLBORNE



ELEVATION C

Actual usable floor space may vary from the stated floor area. Plans and elevations are artist's renderings and may contain options which are not standard on all models. Dunsire Homes Inc reserves the right to make changes to these floorplans, specifications, dimensions and elevations without prior notice and without compensation. Stated dimensions and square footages are approximate and should not be used as representation of the home's usable floor space or actual size. Any square footage of a single-family home or a multi-family home that is stated herein is approximate only, may vary from time to time, and remains subject to change without notice or compensation.

CEDAR



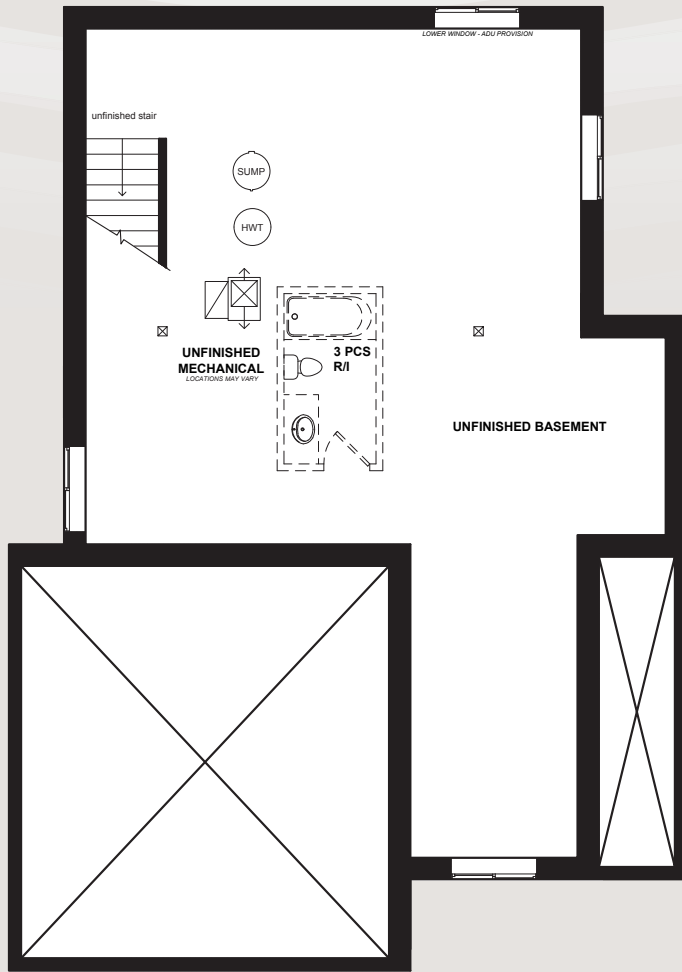
ELEVATION A



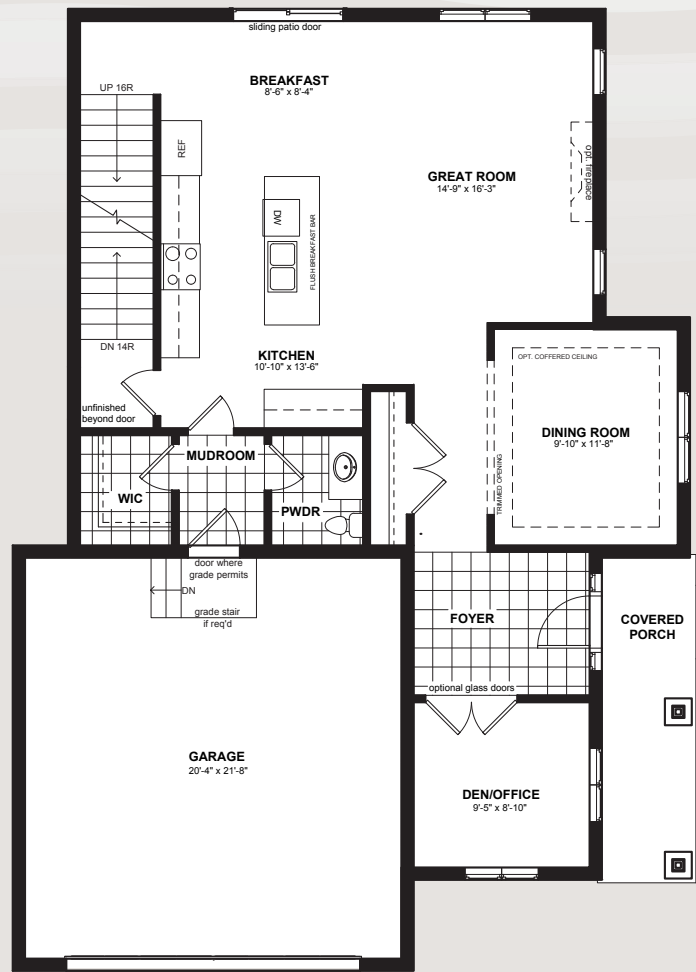
ELEVATION B

 **DUNSIRE** | EST. 2010
DEVELOPMENTS

www.Dunsire.com

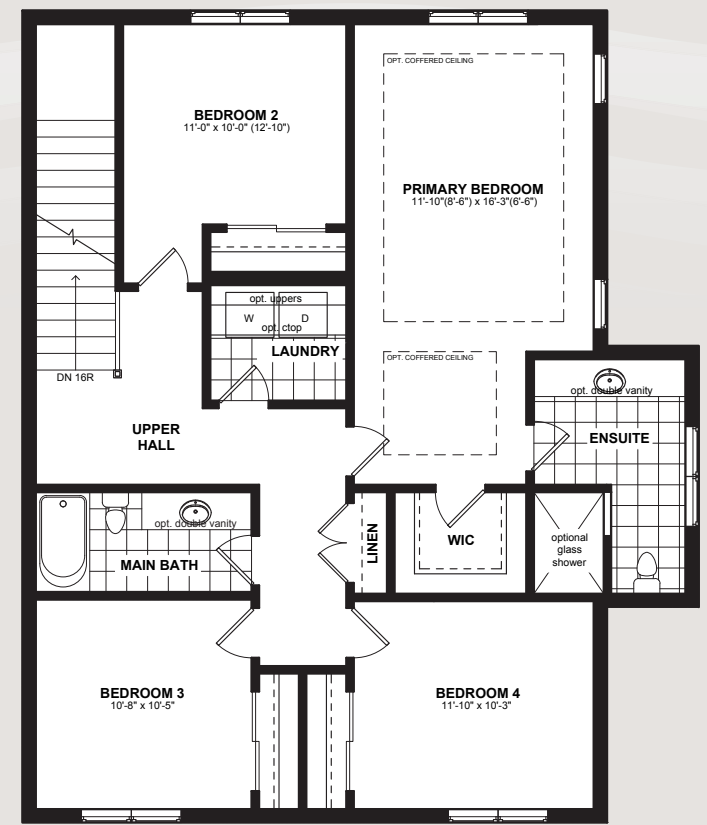


UNFINISHED BASEMENT



MAIN FLOOR

1,104 SQ.FT



SECOND FLOOR

1,251 SQ.FT



CEDAR

 4 Bedrooms

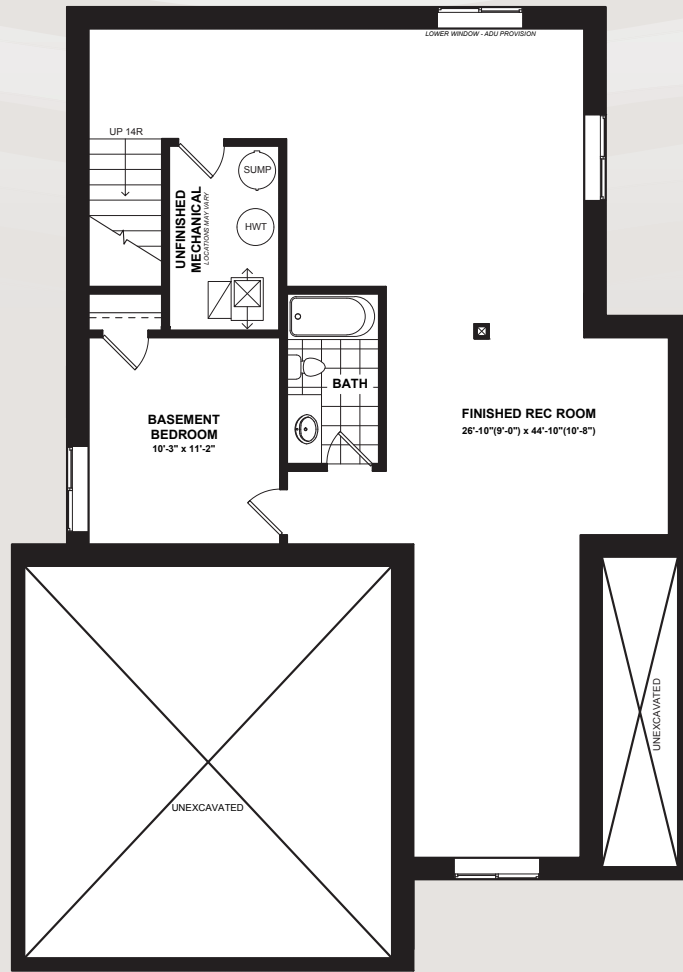
 2.5 Bathrooms

 2,355 Sq.Ft.

Actual usable floor space may vary from the stated floor area. Plans and elevations are artist's renderings and may contain options which are not standard on all models. Dunsire Homes Inc reserves the right to make changes to these floorplans, specifications, dimensions and elevations without prior notice and without compensation. Stated dimensions and square footages are approximate and should not be used as representation of the home's usable floor space or actual size. Any square footage of a single-family home or a multi-family home that is stated herein is approximate only, may vary from time to time, and remains subject to change without notice or compensation.

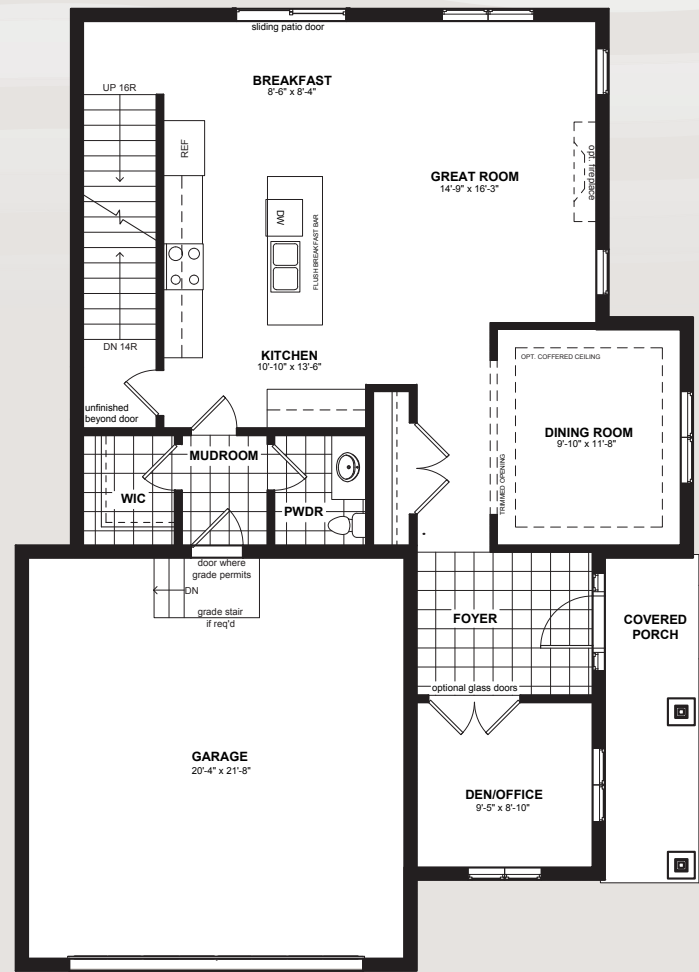


www.Dunsire.com



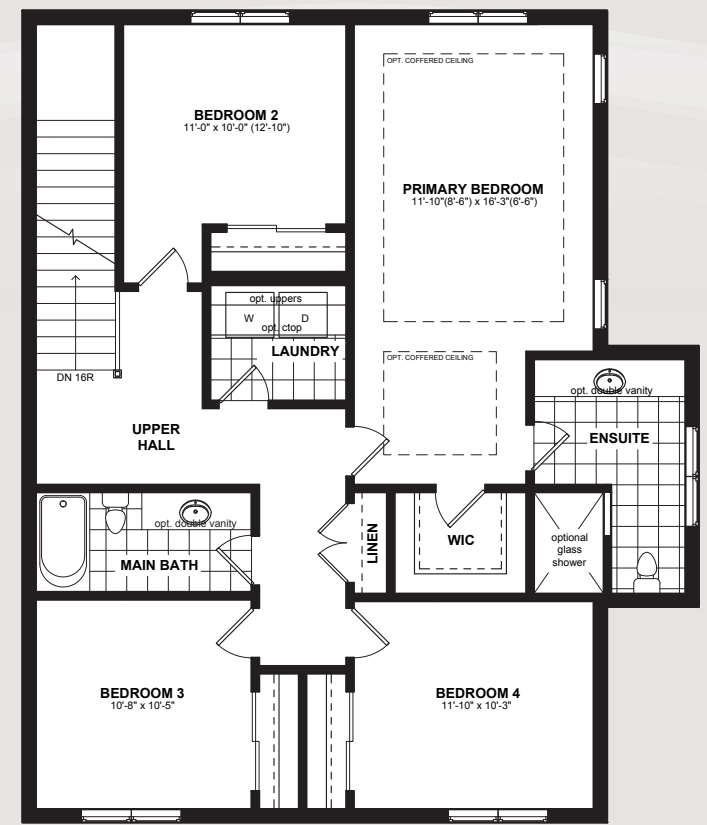
FINISHED BASEMENT

1,136 SQ.FT



MAIN FLOOR

1,104 SQ.FT



SECOND FLOOR

1,251 SQ.FT



CEDAR

5 Bedrooms
(4+1)

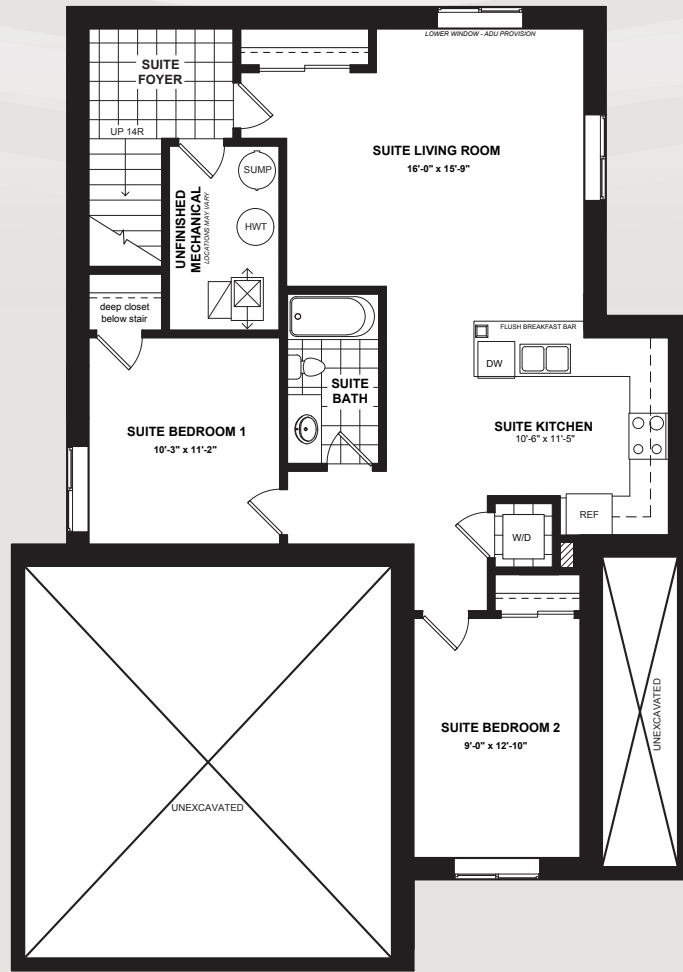
3.5 Bathrooms
(2.5+1)

3491 Sq.Ft.
(2,355+1,136)

Actual usable floor space may vary from the stated floor area. Plans and elevations are artist's renderings and may contain options which are not standard on all models. Dunsire Homes Inc reserves the right to make changes to these floorplans, specifications, dimensions and elevations without prior notice and without compensation. Stated dimensions and square footages are approximate and should not be used as representation of the home's usable floor space or actual size. Any square footage of a single-family home or a multi-family home that is stated herein is approximate only, may vary from time to time, and remains subject to change without notice or compensation.

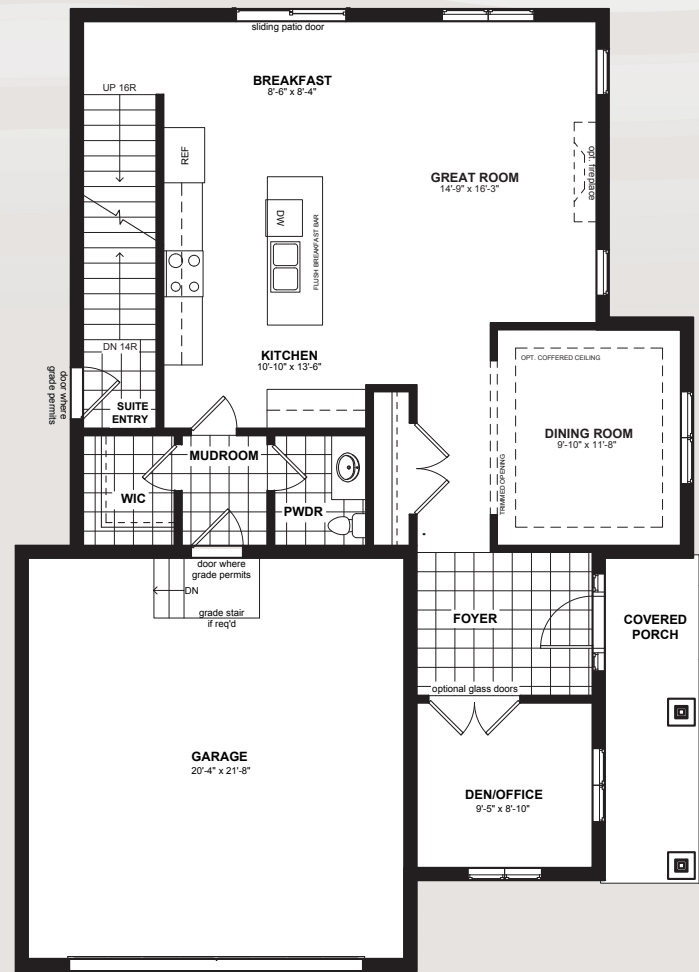


www.Dunsire.com



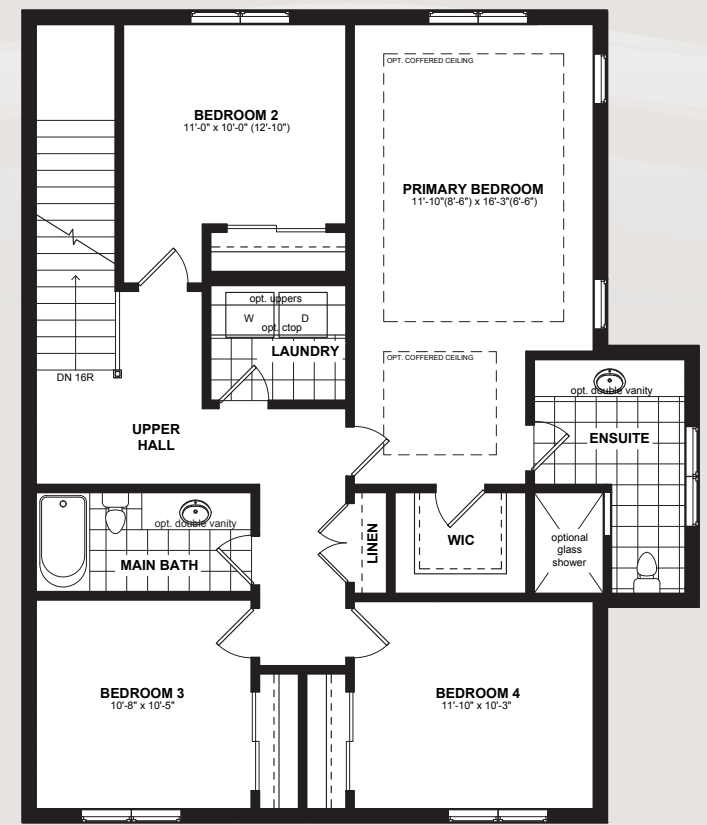
SECONDARY SUITE

1,136 SQ.FT



MAIN FLOOR

1,104 SQ.FT



SECOND FLOOR

1,251 SQ.FT



CEDAR

6 Bedrooms
(4+2)

3.5 Bathrooms
(2.5+1)

3491 Sq.Ft.
(2,355+1,136)

Actual usable floor space may vary from the stated floor area. Plans and elevations are artist's renderings and may contain options which are not standard on all models. Dunsire Homes Inc reserves the right to make changes to these floorplans, specifications, dimensions and elevations without prior notice and without compensation. Stated dimensions and square footages are approximate and should not be used as representation of the home's usable floor space or actual size. Any square footage of a single-family home or a multi-family home that is stated herein is approximate only, may vary from time to time, and remains subject to change without notice or compensation.



www.Dunsire.com



**MEADOW
HEIGHTS**
PORT COLBORNE

HAWTHORN



ELEVATION C



ELEVATION A

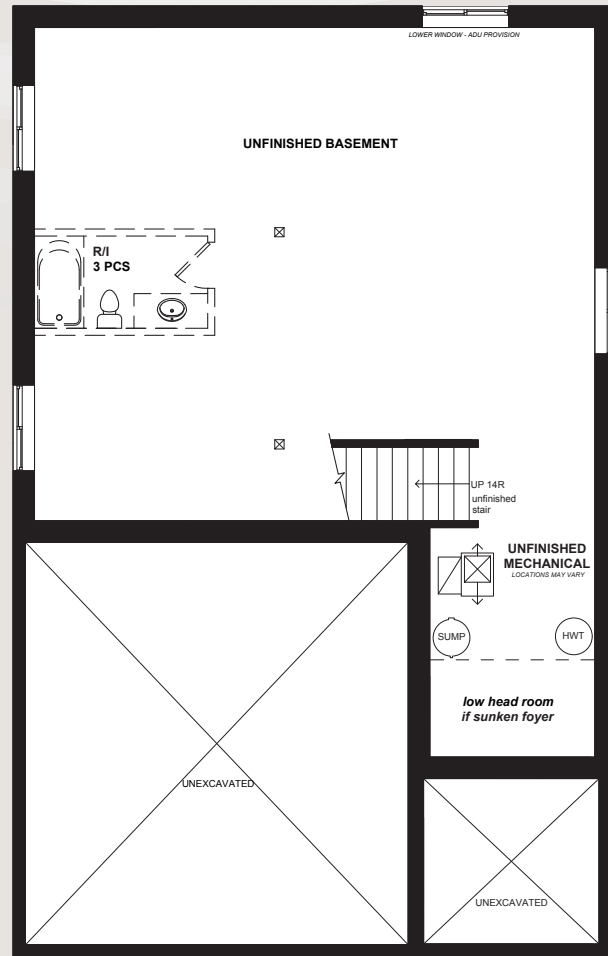


ELEVATION B

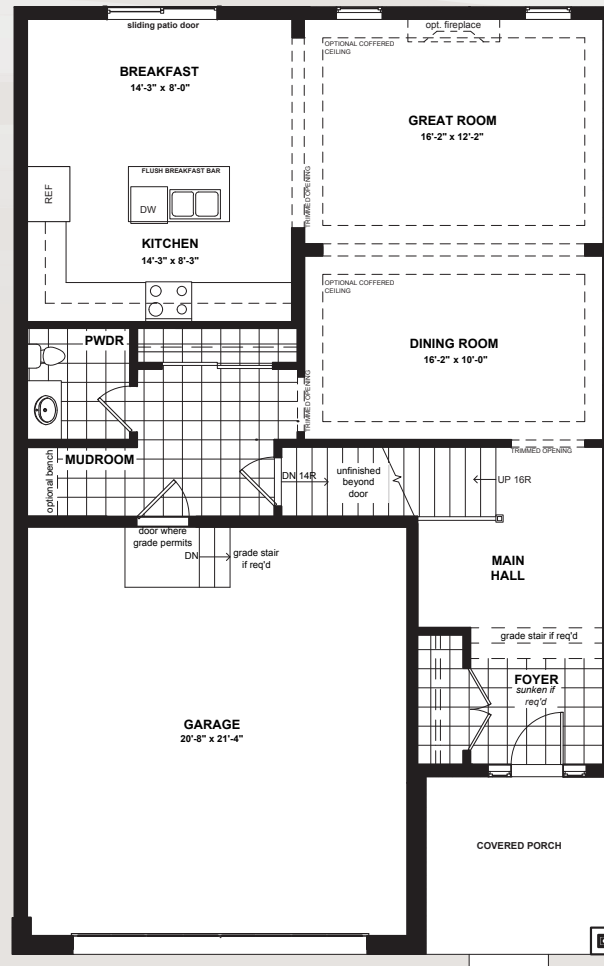
 **DUNSIRE** | EST. 2010
DEVELOPMENTS

www.Dunsire.com

Actual usable floor space may vary from the stated floor area. Plans and elevations are artist's renderings and may contain options which are not standard on all models. Dunsire Homes Inc reserves the right to make changes to these floorplans, specifications, dimensions and elevations without prior notice and without compensation. Stated dimensions and square footages are approximate and should not be used as representation of the home's usable floor space or actual size. Any square footage of a single-family home or a multi-family home that is stated herein is approximate only, may vary from time to time, and remains subject to change without notice or compensation.

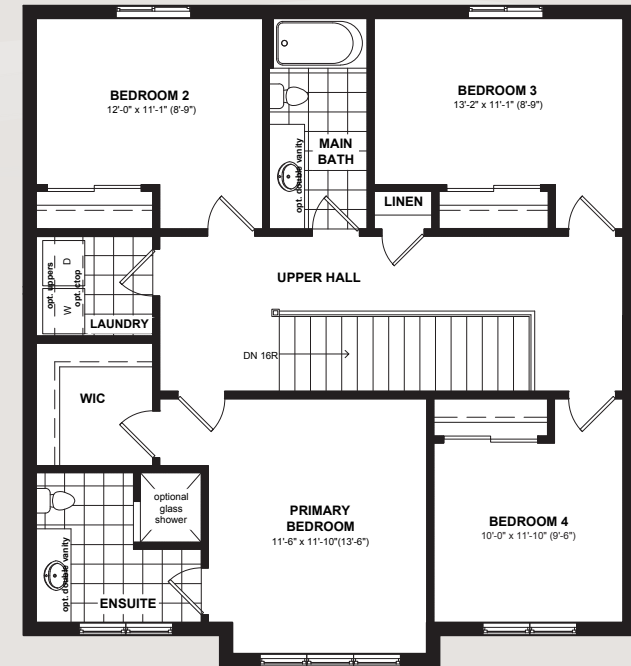


UNFINISHED BASEMENT



MAIN FLOOR

1,015 SQ.FT



SECOND FLOOR

1,116 SQ.FT



HAWTHORN

 4 Bedrooms

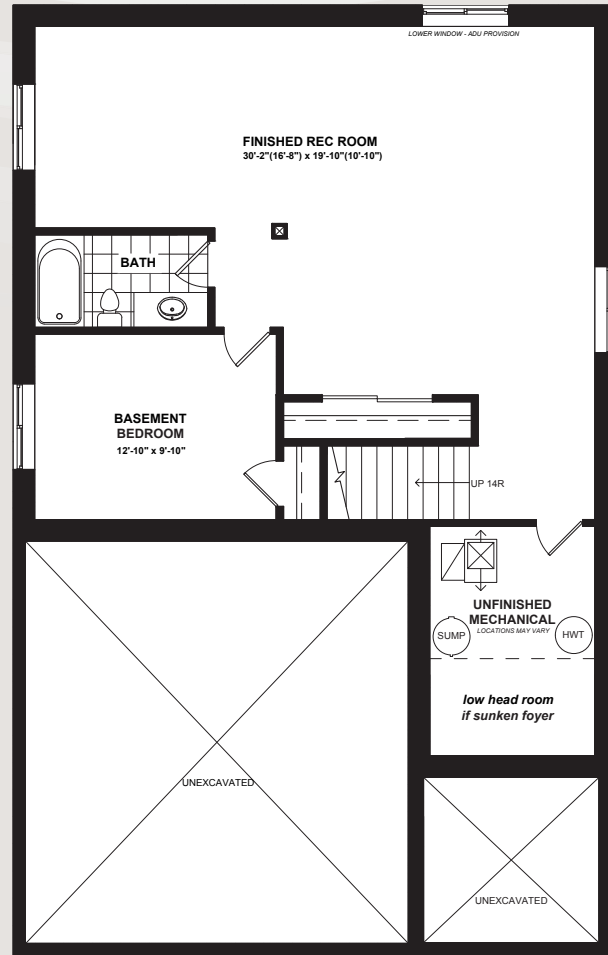
 2.5 Bathrooms

 2,131 Sq.Ft.

Actual usable floor space may vary from the stated floor area. Plans and elevations are artist's renderings and may contain options which are not standard on all models. Dunsire Homes Inc reserves the right to make changes to these floorplans, specifications, dimensions and elevations without prior notice and without compensation. Stated dimensions and square footages are approximate and should not be used as representation of the home's usable floor space or actual size. Any square footage of a single-family home or a multi-family home that is stated herein is approximate only, may vary from time to time, and remains subject to change without notice or compensation.

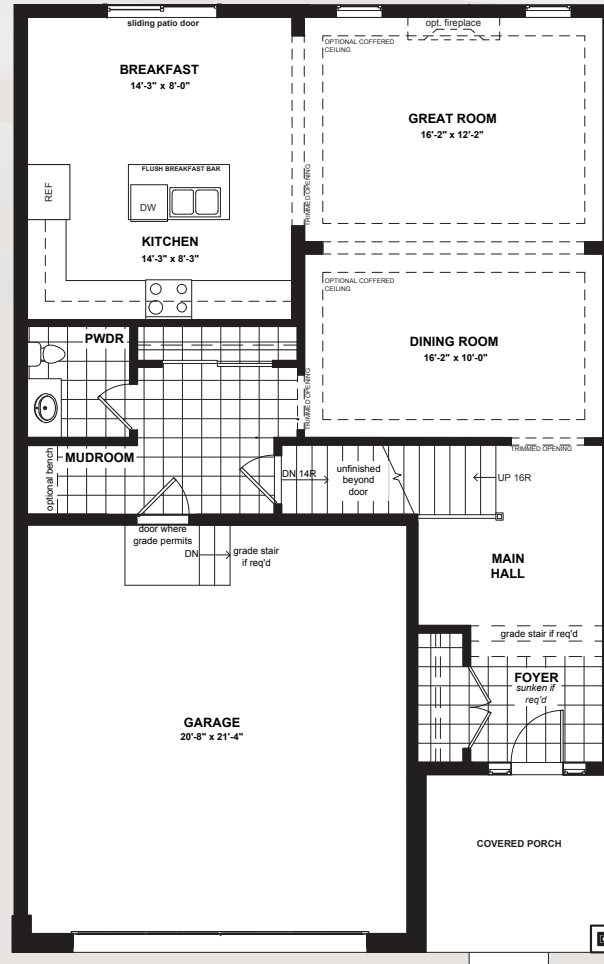


www.Dunsire.com



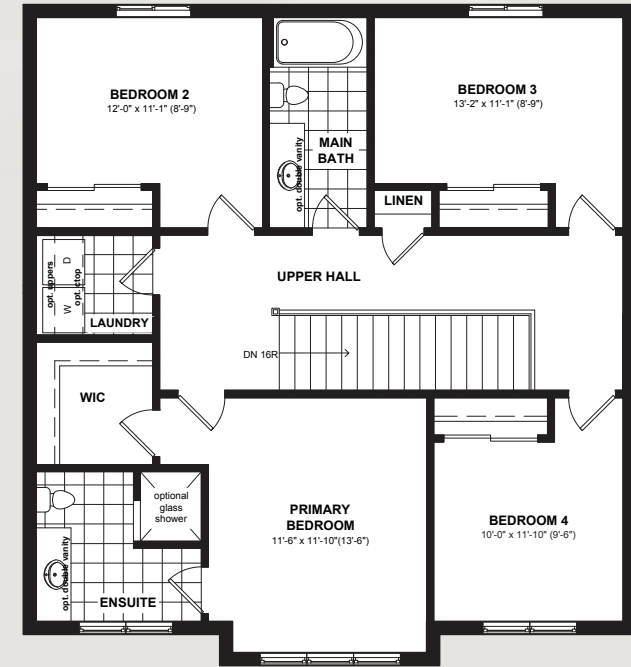
FINISHED BASEMENT

1,154 SQ.FT



MAIN FLOOR

1,015 SQ.FT



SECOND FLOOR

1,116 SQ.FT



HAWTHORN


5 Bedrooms
(4+1)

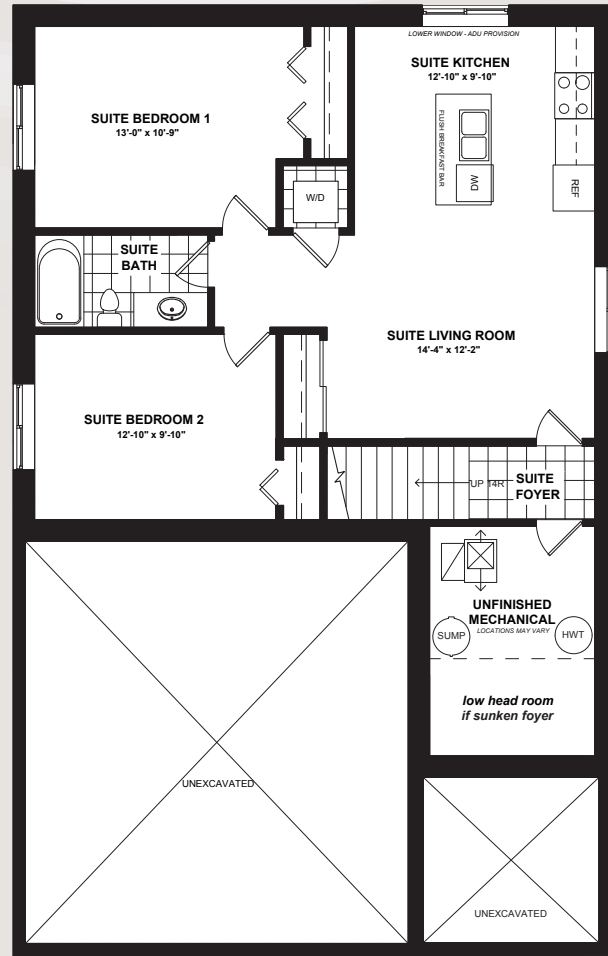

3.5 Bathrooms
(2.5+1)


3,285 Sq.Ft.
(2,131+1,154)

Actual usable floor space may vary from the stated floor area. Plans and elevations are artist's renderings and may contain options which are not standard on all models. Dunsire Homes Inc reserves the right to make changes to these floorplans, specifications, dimensions and elevations without prior notice and without compensation. Stated dimensions and square footages are approximate and should not be used as representation of the home's usable floor space or actual size. Any square footage of a single-family home or a multi-family home that is stated herein is approximate only, may vary from time to time, and remains subject to change without notice or compensation.

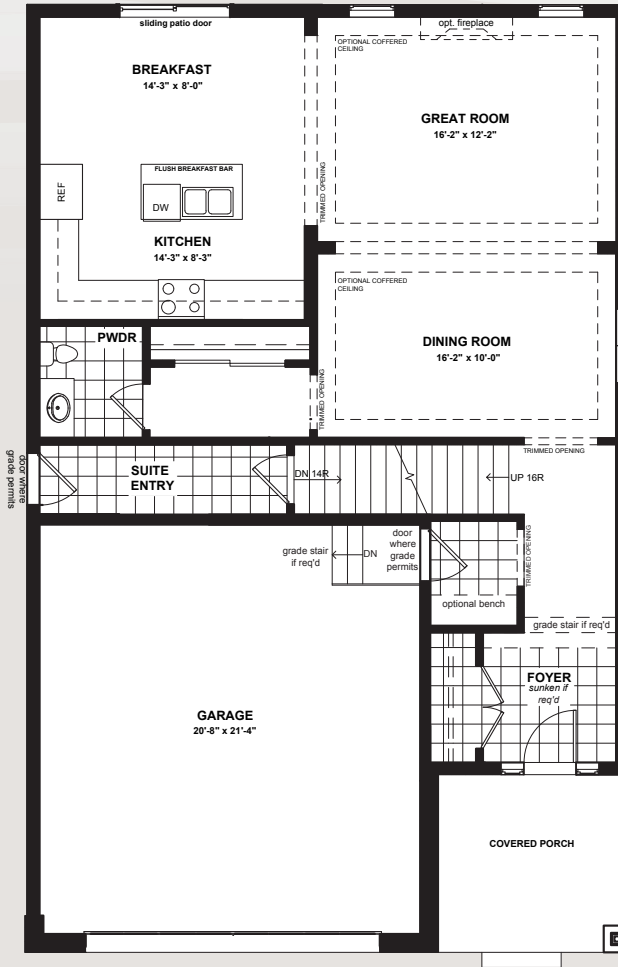


www.Dunsire.com



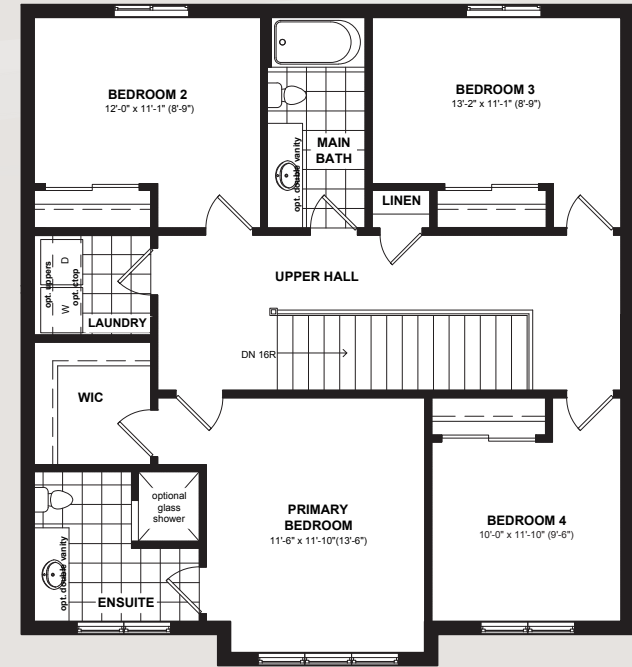
SECONDARY SUITE

1,154 SQ.FT



MAIN FLOOR

1,015 SQ.FT

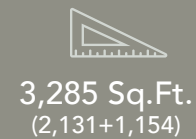


SECOND FLOOR

1,116 SQ.FT



HAWTHORN



www.Dunsire.com

Actual usable floor space may vary from the stated floor area. Plans and elevations are artist's renderings and may contain options which are not standard on all models. Dunsire Homes Inc reserves the right to make changes to these floorplans, specifications, dimensions and elevations without prior notice and without compensation. Stated dimensions and square footages are approximate and should not be used as representation of the home's usable floor space or actual size. Any square footage of a single-family home or a multi-family home that is stated herein is approximate only, may vary from time to time, and remains subject to change without notice or compensation.



MEADOW
HEIGHTS
PORT COLBORNE



ELEVATION C

Actual usable floor space may vary from the stated floor area. Plans and elevations are artist's renderings and may contain options which are not standard on all models. Dunsire Homes Inc reserves the right to make changes to these floorplans, specifications, dimensions and elevations without prior notice and without compensation. Stated dimensions and square footages are approximate and should not be used as representation of the home's usable floor space or actual size. Any square footage of a single-family home or a multi-family home that is stated herein is approximate only, may vary from time to time, and remains subject to change without notice or compensation.

LAUREL



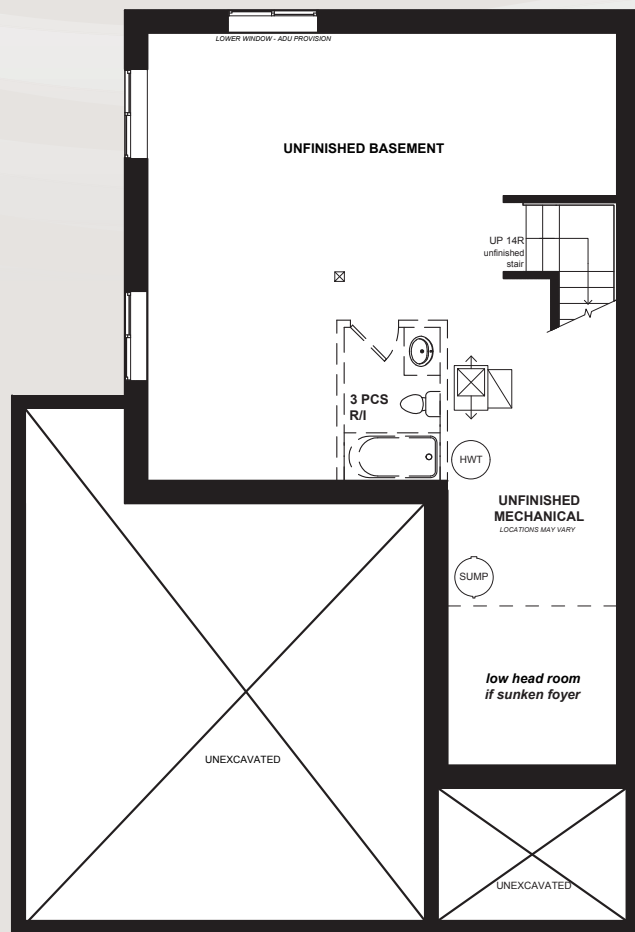
ELEVATION A



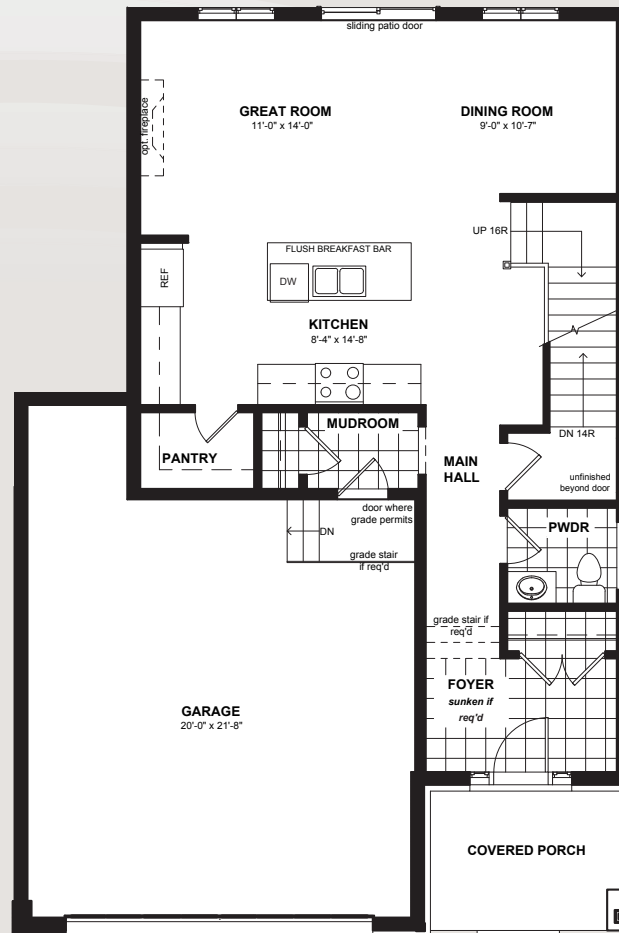
ELEVATION B

 **DUNSIRE** | EST. 2010
DEVELOPMENTS

www.Dunsire.com

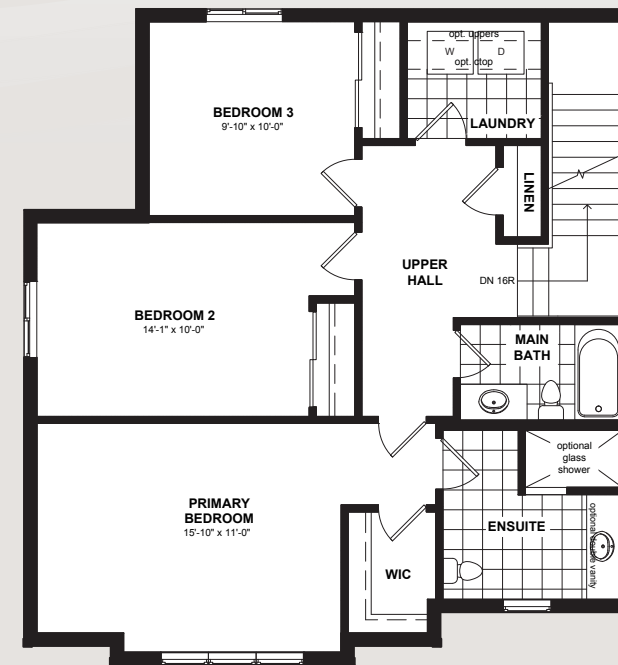


UNFINISHED BASEMENT



MAIN FLOOR

814 SQ.FT



SECOND FLOOR

1,003 SQ.FT



LAUREL

 3 Bedrooms

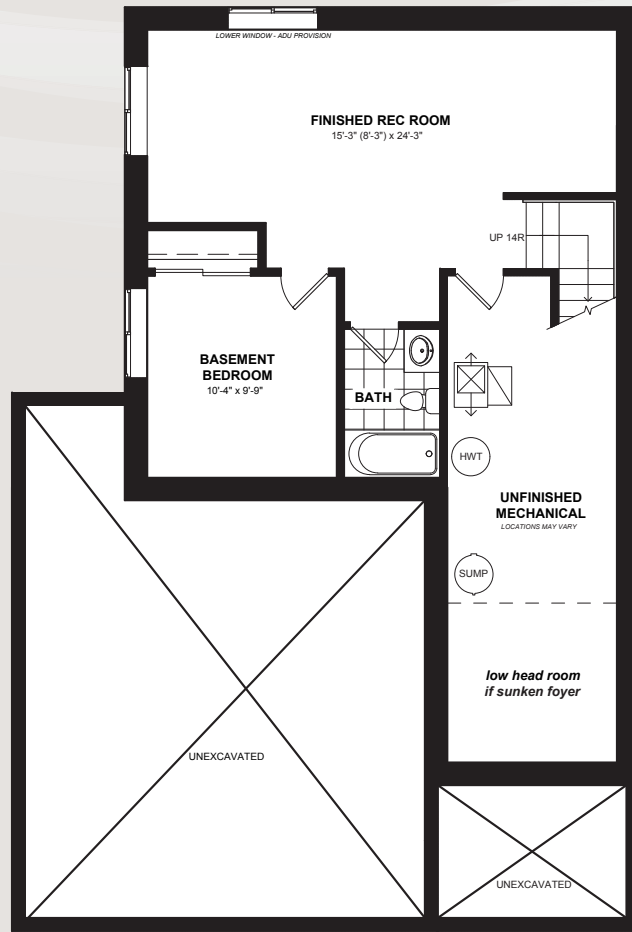
 2.5 Bathrooms

 1,817 Sq.Ft.

Actual usable floor space may vary from the stated floor area. Plans and elevations are artist's renderings and may contain options which are not standard on all models. Dunsire Homes Inc reserves the right to make changes to these floorplans, specifications, dimensions and elevations without prior notice and without compensation. Stated dimensions and square footages are approximate and should not be used as representation of the home's usable floor space or actual size. Any square footage of a single-family home or a multi-family home that is stated herein is approximate only, may vary from time to time, and remains subject to change without notice or compensation

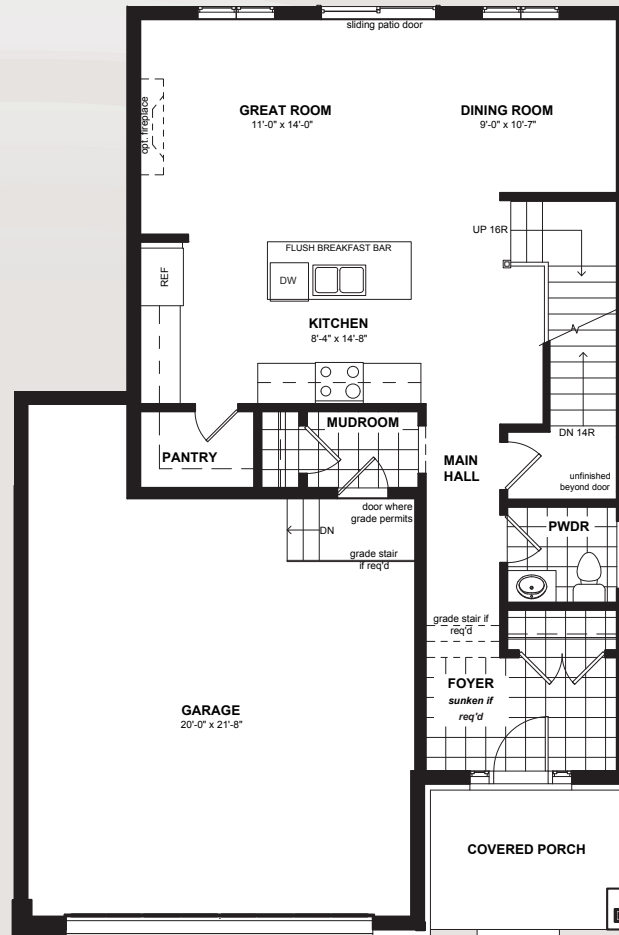


www.Dunsire.com



FINISHED BASEMENT

859 SQ.FT



MAIN FLOOR

814 SQ.FT



SECOND FLOOR


1,003 SQ.FT



LAUREL


4 Bedrooms
(3+1)

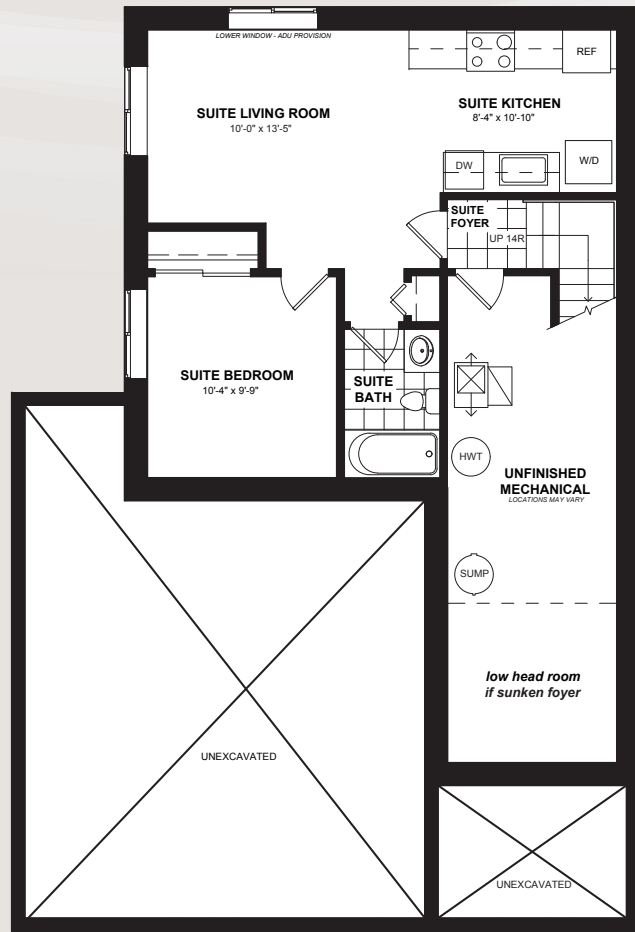

3.5 Bathrooms
(2.5+1)


2,676 Sq.Ft.
(1817+859)

Actual usable floor space may vary from the stated floor area. Plans and elevations are artist's renderings and may contain options which are not standard on all models. Dunsire Homes Inc reserves the right to make changes to these floorplans, specifications, dimensions and elevations without prior notice and without compensation. Stated dimensions and square footages are approximate and should not be used as representation of the home's usable floor space or actual size. Any square footage of a single-family home or a multi-family home that is stated herein is approximate only, may vary from time to time, and remains subject to change without notice or compensation.

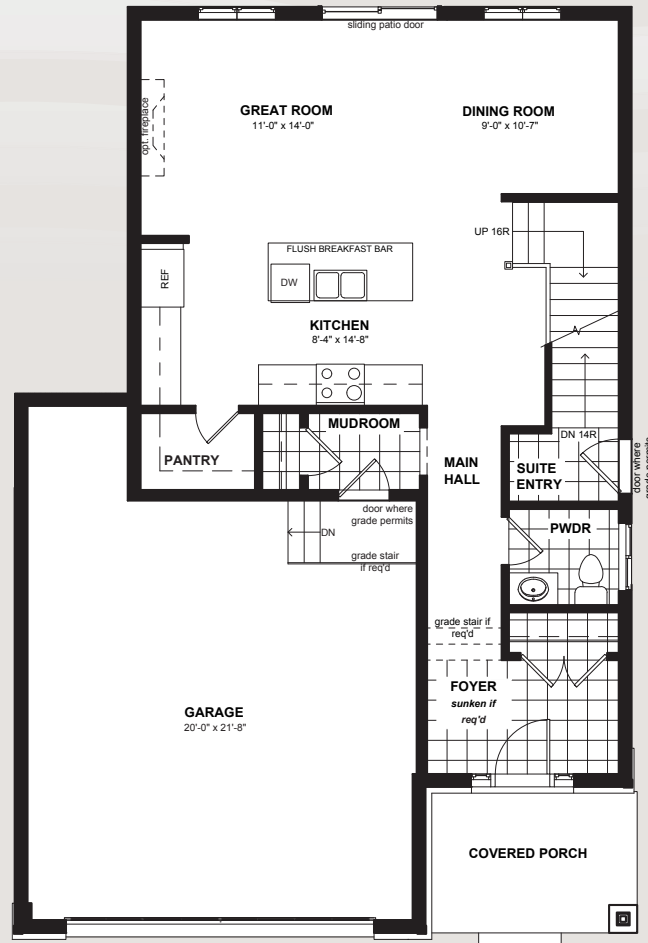


www.Dunsire.com



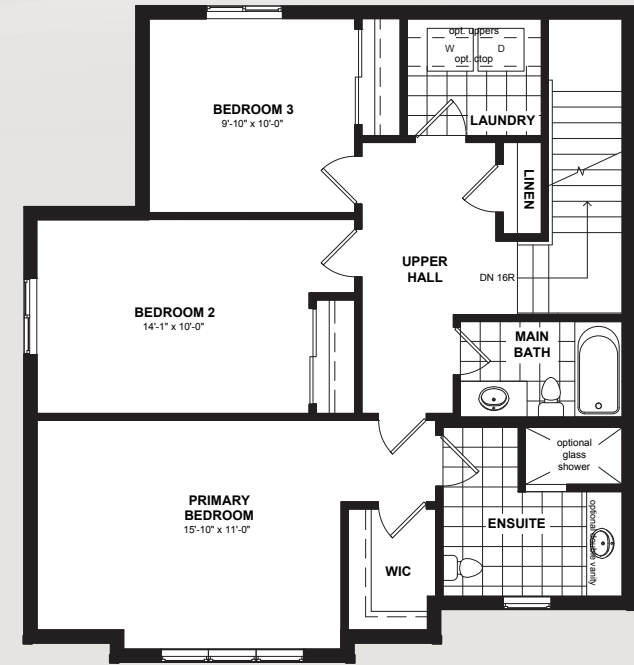
SECONDARY SUITE

859 SQ.FT



MAIN FLOOR

814 SQ.FT



SECOND FLOOR

1,003 SQ.FT



LAUREL

4 Bedrooms
(3+1)

3.5 Bathrooms
(2.5+1)

2,676 Sq.Ft.
(1817+859)

Actual usable floor space may vary from the stated floor area. Plans and elevations are artist's renderings and may contain options which are not standard on all models. Dunsire Homes Inc reserves the right to make changes to these floorplans, specifications, dimensions and elevations without prior notice and without compensation. Stated dimensions and square footages are approximate and should not be used as representation of the home's usable floor space or actual size. Any square footage of a single-family home or a multi-family home that is stated herein is approximate only, may vary from time to time, and remains subject to change without notice or compensation.



www.Dunsire.com



MEADOW
HEIGHTS
PORT COLBORNE

PRIMROSE



ELEVATION C



ELEVATION A

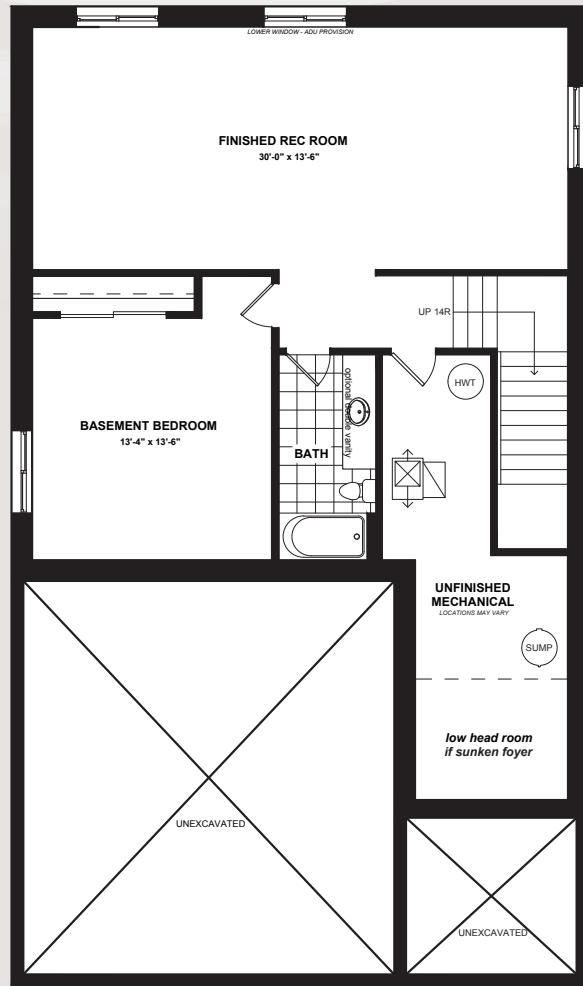


ELEVATION B

Actual usable floor space may vary from the stated floor area. Plans and elevations are artist's renderings and may contain options which are not standard on all models. Dunsire Homes Inc reserves the right to make changes to these floorplans, specifications, dimensions and elevations without prior notice and without compensation. Stated dimensions and square footages are approximate and should not be used as representation of the home's usable floor space or actual size. Any square footage of a single-family home or a multi-family home that is stated herein is approximate only, may vary from time to time, and remains subject to change without notice or compensation

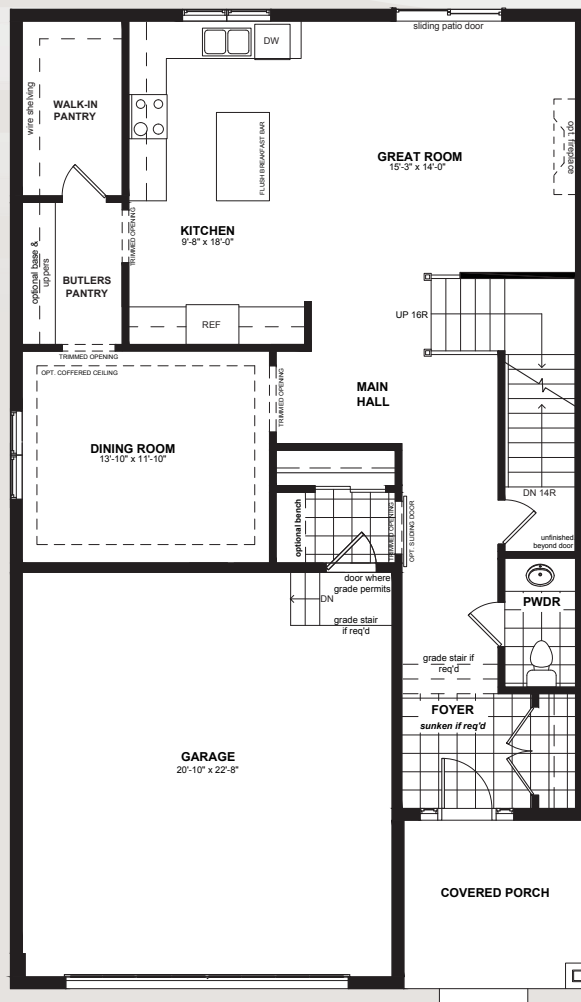
 **DUNSIRE** | EST. 2010
DEVELOPMENTS

www.Dunsire.com



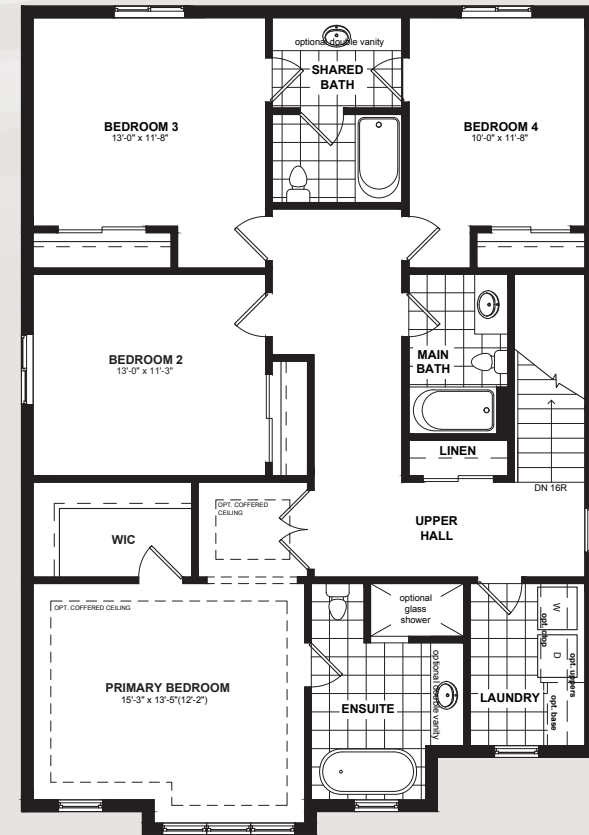
FINISHED BASEMENT

1,228 SQ.FT



MAIN FLOOR

1,180 SQ.FT



SECOND FLOOR

1,480 SQ.FT



PRIMROSE


5 Bedrooms
(4+1)

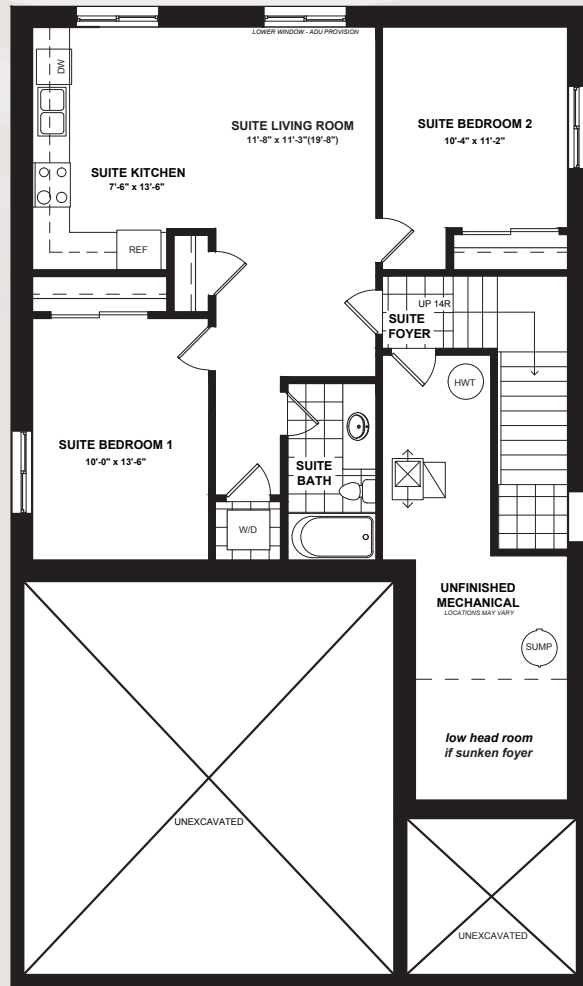

4.5 Bathrooms
(3.5+1)


3,888 Sq.Ft.
(2,660+1,228)

Actual usable floor space may vary from the stated floor area. Plans and elevations are artist's renderings and may contain options which are not standard on all models. Dunsire Homes Inc reserves the right to make changes to these floorplans, specifications, dimensions and elevations without prior notice and without compensation. Stated dimensions and square footages are approximate and should not be used as representation of the home's usable floor space or actual size. Any square footage of a single-family home or a multi-family home that is stated herein is approximate only, may vary from time to time, and remains subject to change without notice or compensation.

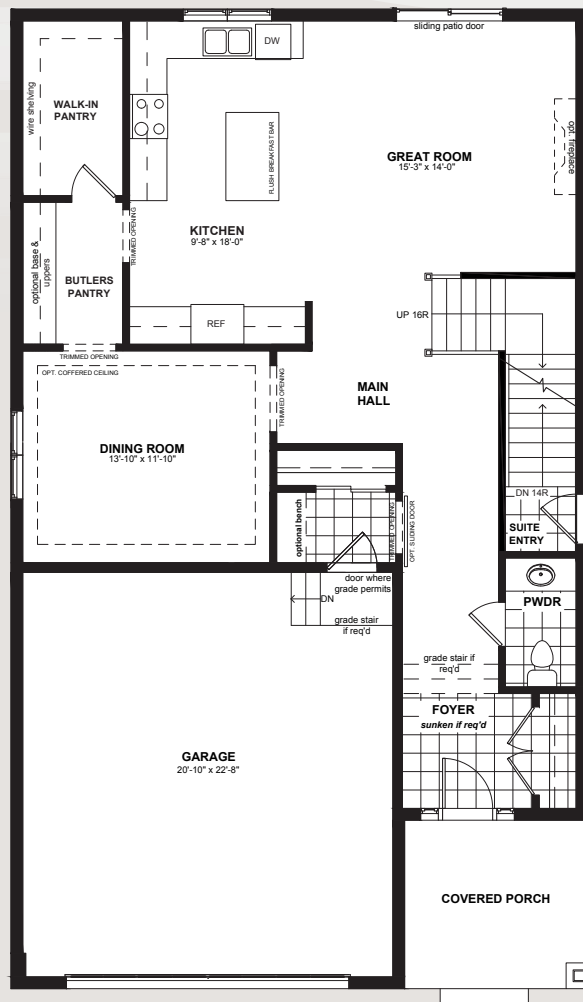


www.Dunsire.com



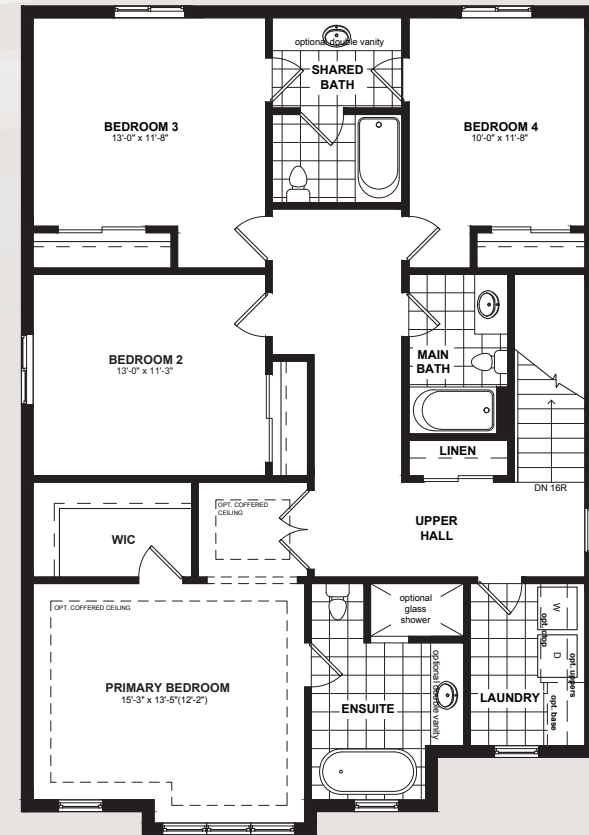
SECONDARY SUITE

1,228 SQ.FT



MAIN FLOOR

1,180 SQ.FT



SECOND FLOOR

1,480 SQ.FT



PRIMROSE

6 Bedrooms
(4+2)

4.5 Bathrooms
(3.5+1)

3,888 Sq.Ft.
(2,660+1,228)

Actual usable floor space may vary from the stated floor area. Plans and elevations are artist's renderings and may contain options which are not standard on all models. Dunsire Homes Inc reserves the right to make changes to these floorplans, specifications, dimensions and elevations without prior notice and without compensation. Stated dimensions and square footages are approximate and should not be used as representation of the home's usable floor space or actual size. Any square footage of a single-family home or a multi-family home that is stated herein is approximate only, may vary from time to time, and remains subject to change without notice or compensation.



www.Dunsire.com