

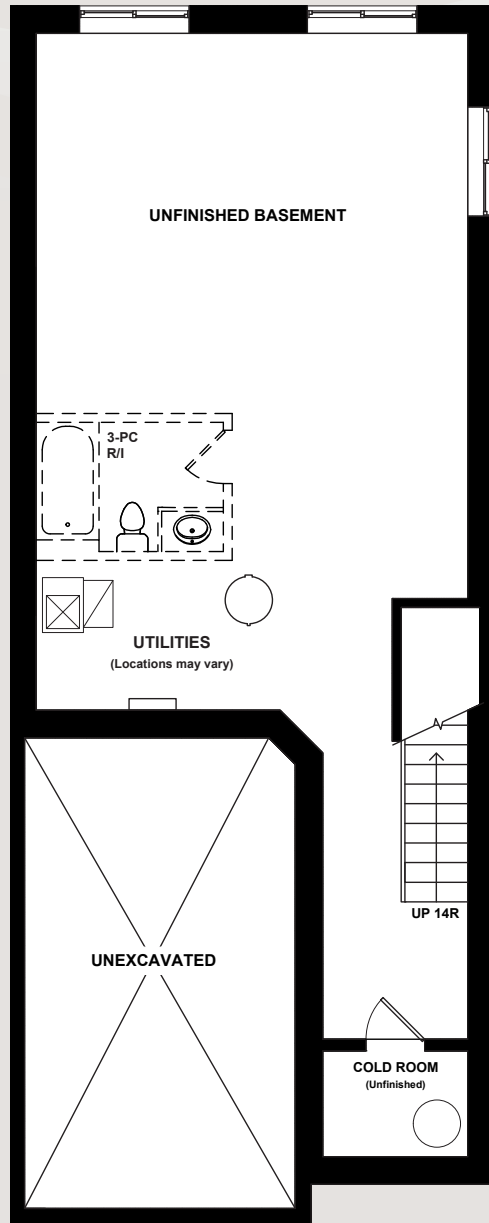


BIRCH

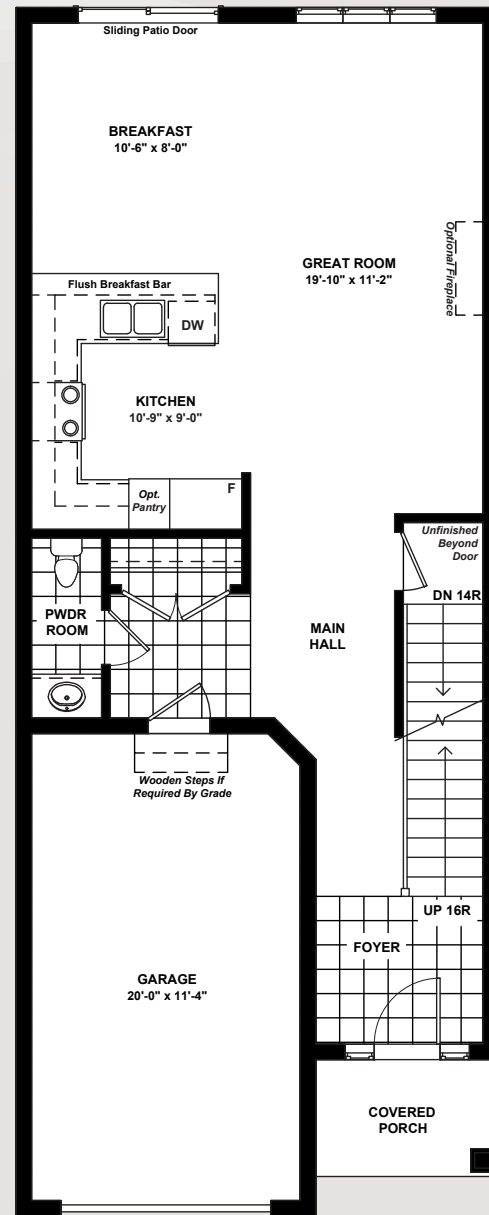
This unit is displayed on the right of the render above. Actual usable floor space may vary from the stated floor area. Plans and elevations are artist's renderings and may contain options which are not standard on all models. Dunsire Homes Inc reserves the right to make changes to these floorplans, specifications, dimensions and elevations without prior notice and without compensation. Stated dimensions and square footages are approximate and should not be used as representation of the home's usable floor space or actual size. Any square footage of a single-family home or a multi-family home that is stated herein is approximate only, may vary from time to time, and remains subject to change without notice or compensation.



www.Dunsire.com

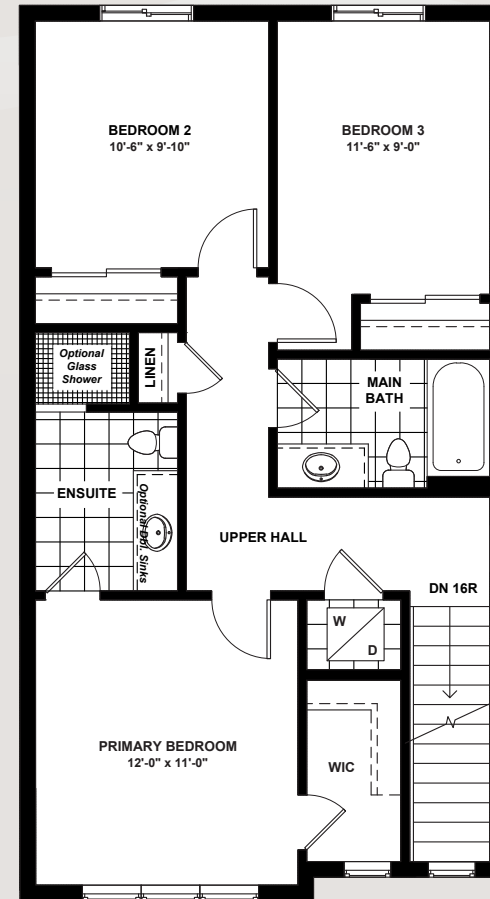


UNFINISHED BASEMENT



STANDARD MAIN FLOOR

679 SQ.FT.



SECOND FLOOR

766 SQ.FT.



MEADOW
HEIGHTS
PORT COLBORNE

BIRCH



1,445 Sq.Ft.



3 Bedrooms

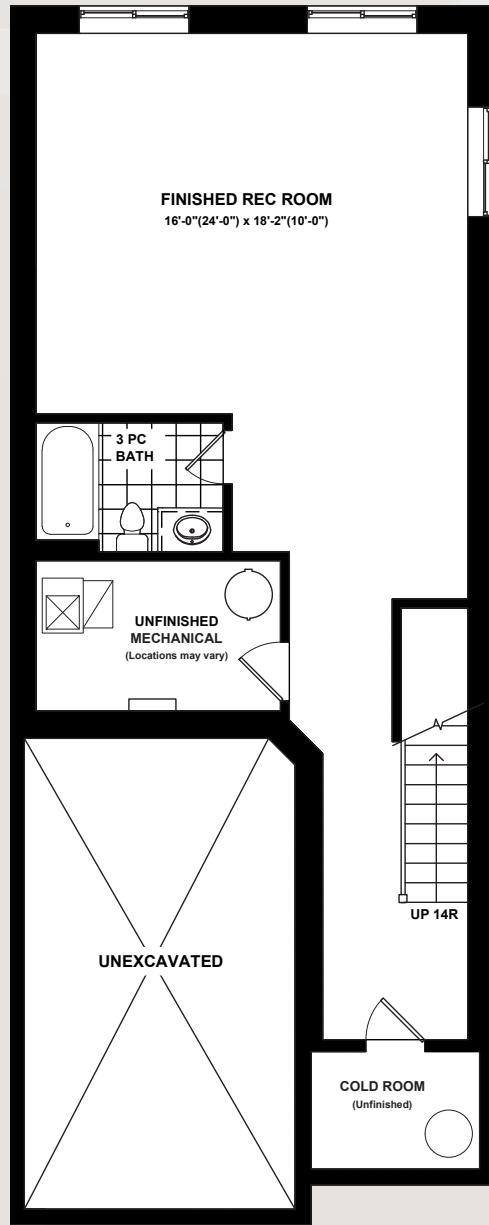


2.5 Bathrooms

DUNSIRE | EST. 2010
DEVELOPMENTS

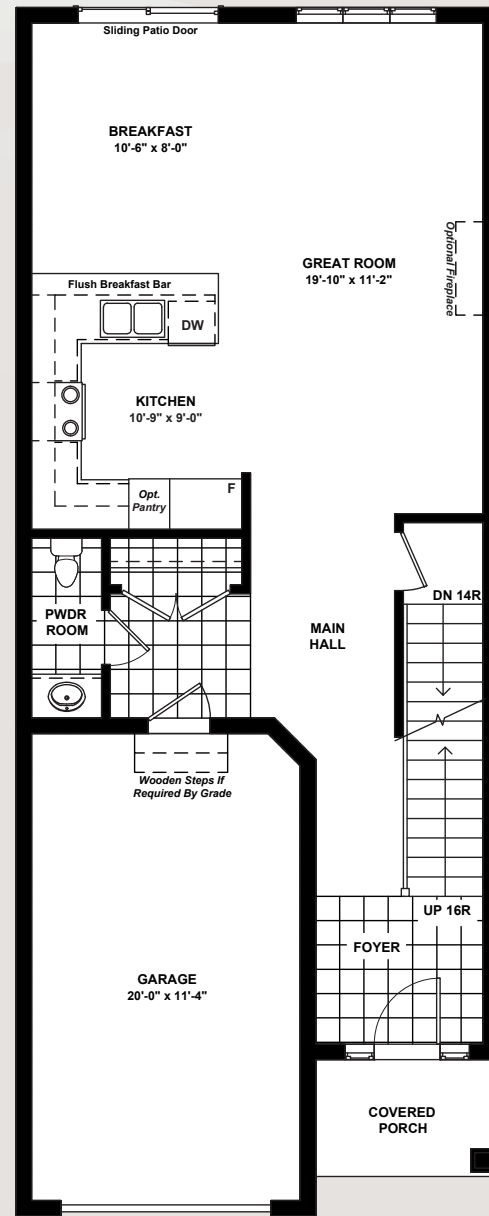
www.Dunsire.com

Actual usable floor space may vary from the stated floor area. Plans and elevations are artist's renderings and may contain options which are not standard on all models. Dunsire Homes Inc reserves the right to make changes to these floorplans, specifications, dimensions and elevations without prior notice and without compensation. Stated dimensions and square footages are approximate and should not be used as representation of the home's usable floor space or actual size. Any square footage of a single-family home or a multi-family home that is stated herein is approximate only, may vary from time to time, and remains subject to change without notice or compensation.



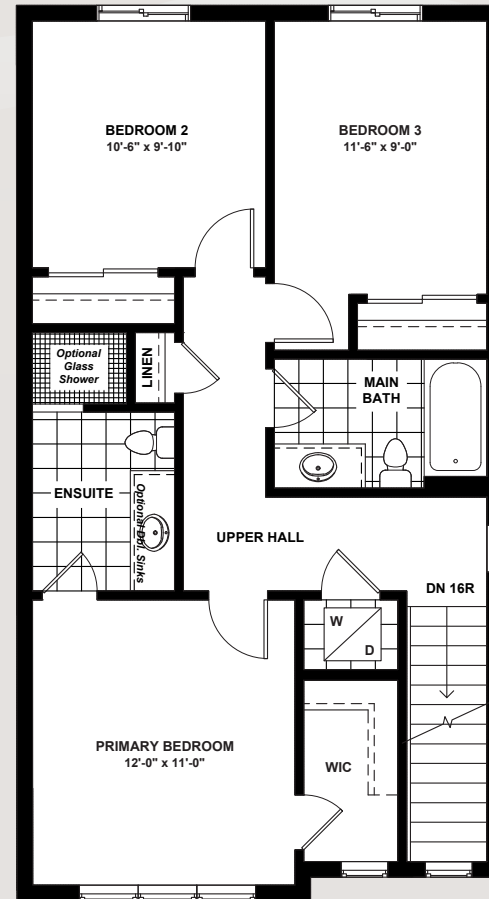
OPT. FINISHED BASEMENT

664 SQ.FT.



MAIN FLOOR WITH
OPT. FINISHED BASEMENT

679 SQ.FT.



SECOND FLOOR

766 SQ.FT.



MEADOW
HEIGHTS
PORT COLBORNE

BIRCH



2,109 Sq.Ft.



3 Bedrooms

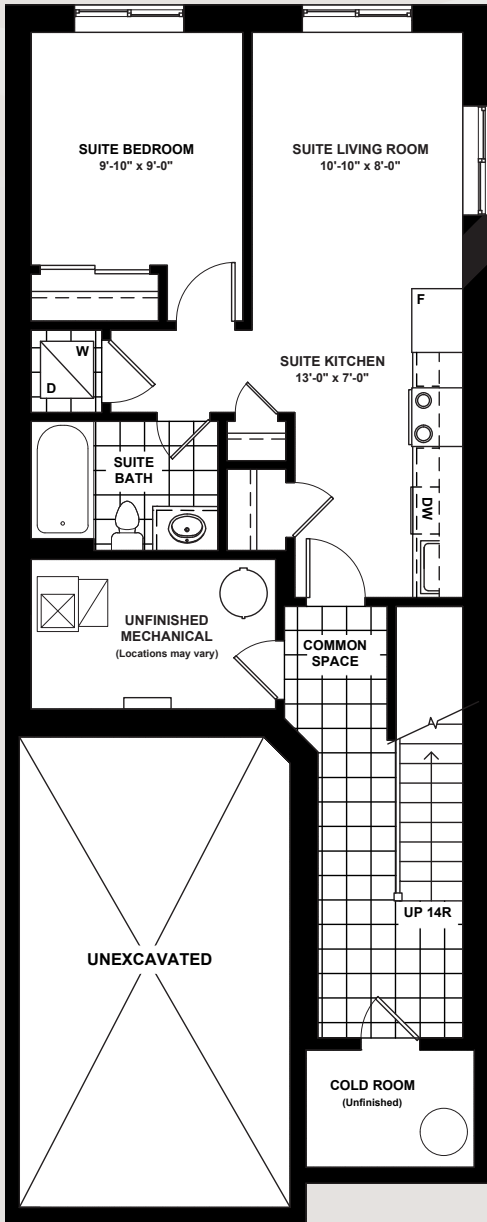


2.5+1 Bathrooms

 **DUNSIRE** | EST. 2010
DEVELOPMENTS

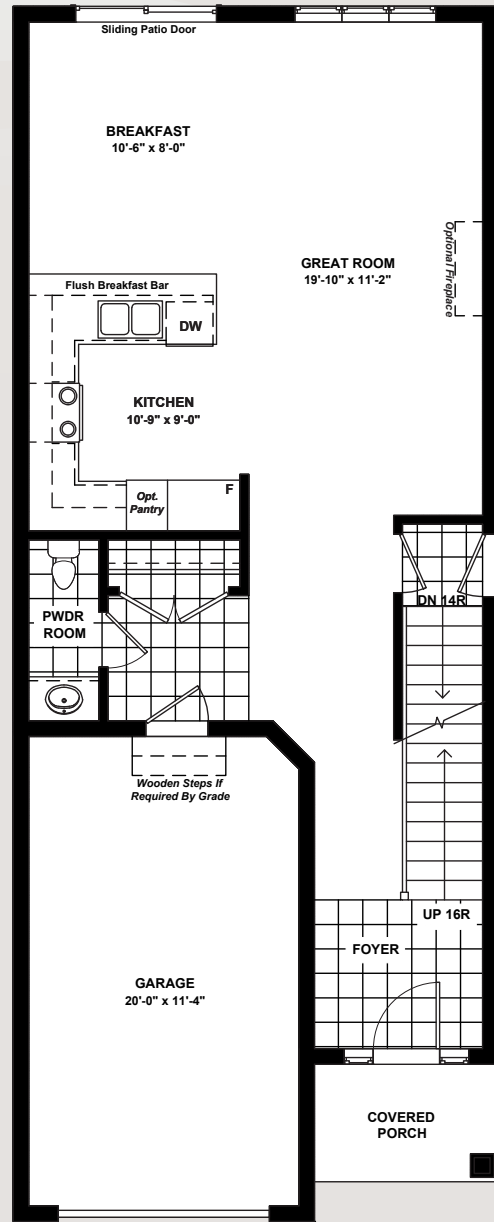
www.Dunsire.com

Actual usable floor space may vary from the stated floor area. Plans and elevations are artist's renderings and may contain options which are not standard on all models. Dunsire Homes Inc reserves the right to make changes to these floorplans, specifications, dimensions and elevations without prior notice and without compensation. Stated dimensions and square footages are approximate and should not be used as representation of the home's usable floor space or actual size. Any square footage of a single-family home or a multi-family home that is stated herein is approximate only, may vary from time to time, and remains subject to change without notice or compensation



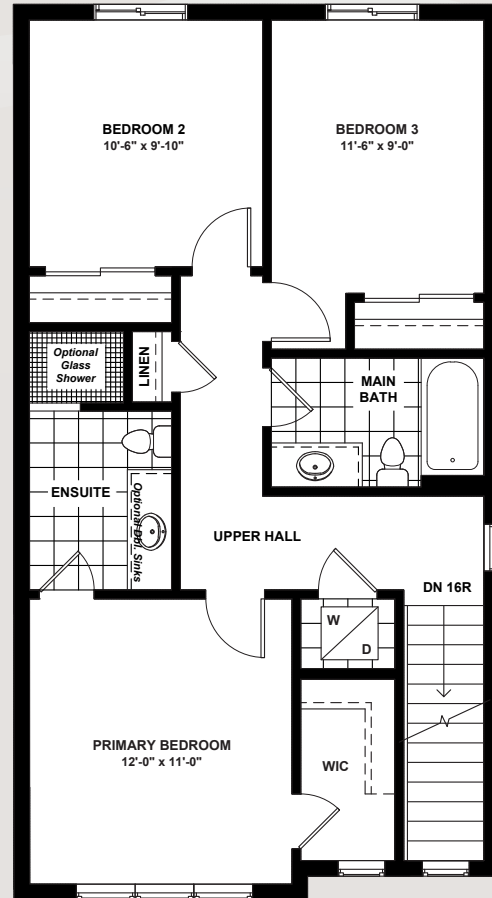
OPT. ADU 493 SQ.FT.

COMMON SPACE 171 SQ.FT.



OPT. MAIN FLOOR
WITH ADU ENTRY

689 SQ.FT.



SECOND FLOOR

766 SQ.FT.



MEADOW
HEIGHTS
PORT COLBORNE

BIRCH



2,119 Sq.Ft.



3+1 Bedrooms



2.5+1 Bathrooms

DUNSIRE | EST. 2010
DEVELOPMENTS

www.Dunsire.com

Actual usable floor space may vary from the stated floor area. Plans and elevations are artist's renderings and may contain options which are not standard on all models. Dunsire Homes Inc reserves the right to make changes to these floorplans, specifications, dimensions and elevations without prior notice and without compensation. Stated dimensions and square footages are approximate and should not be used as representation of the home's usable floor space or actual size. Any square footage of a single-family home or a multi-family home that is stated herein is approximate only, may vary from time to time, and remains subject to change without notice or compensation



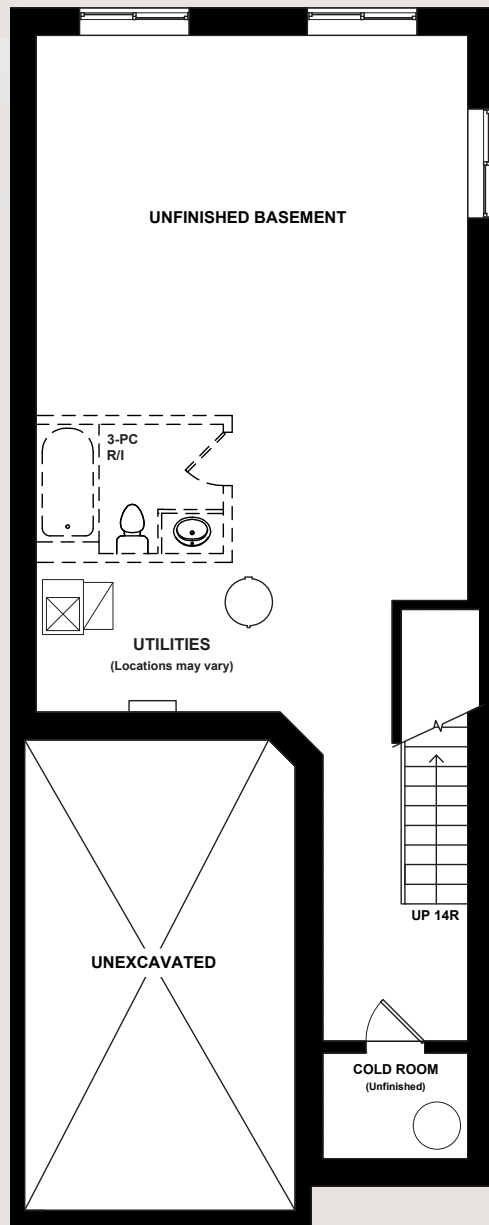

**MEADOW
HEIGHTS**
PORT COLBORNE

CHESTNUT

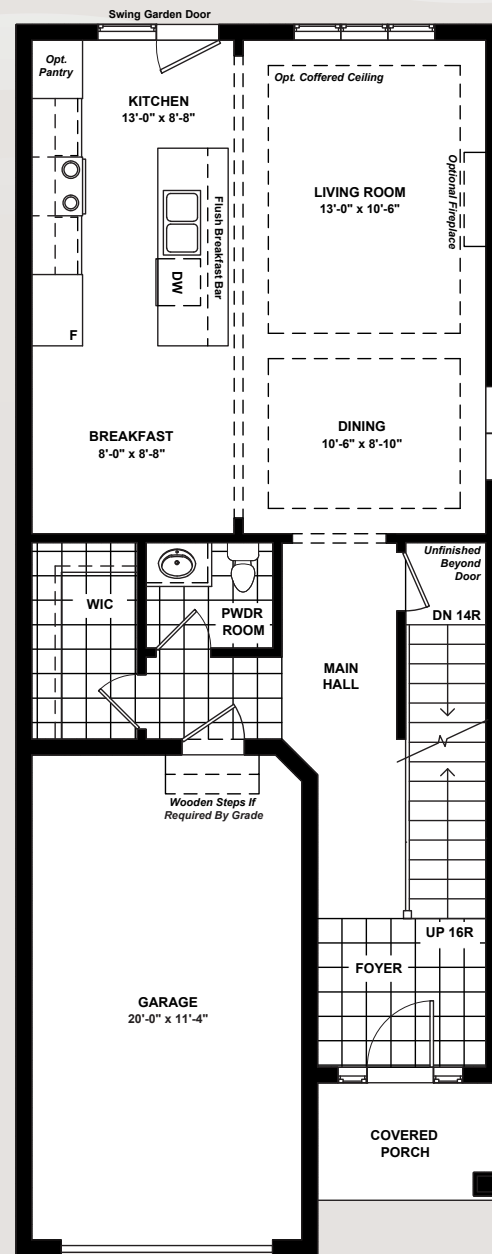
This unit is displayed on the right of the render above. Actual usable floor space may vary from the stated floor area. Plans and elevations are artist's renderings and may contain options which are not standard on all models. Dunsire Homes Inc reserves the right to make changes to these floorplans, specifications, dimensions and elevations without prior notice and without compensation. Stated dimensions and square footages are approximate and should not be used as representation of the home's usable floor space or actual size. Any square footage of a single-family home or a multi-family home that is stated herein is approximate only, may vary from time to time, and remains subject to change without notice or compensation.

 **DUNSIRE** | EST.
DEVELOPMENTS | 2010

www.Dunsire.com

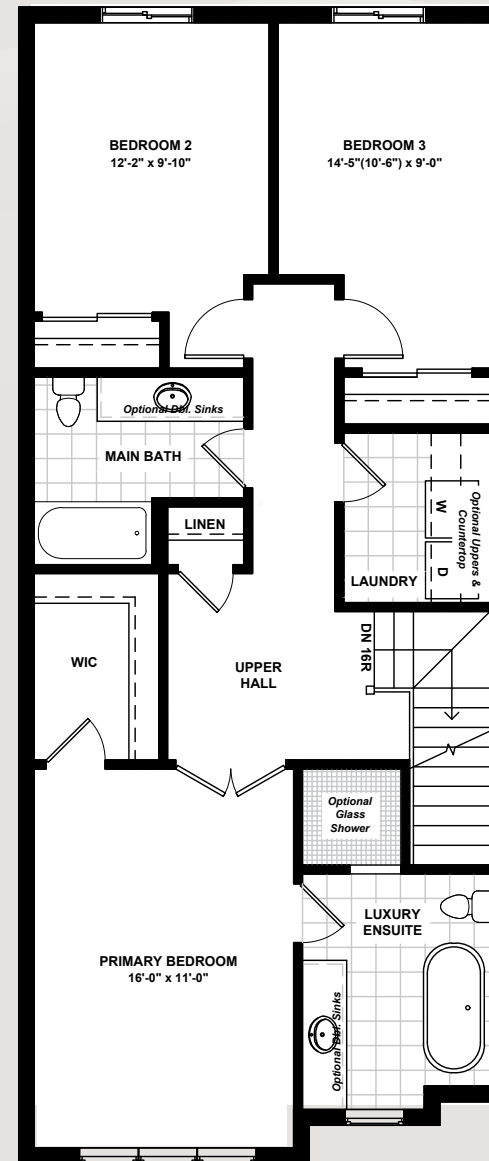


UNFINISHED BASEMENT



STANDARD MAIN FLOOR

679 SQ.FT.



SECOND FLOOR

982 SQ.FT.



MEADOW
HEIGHTS
PORT COLBORNE

CHESTNUT



1,661 Sq.Ft.



3 Bedrooms

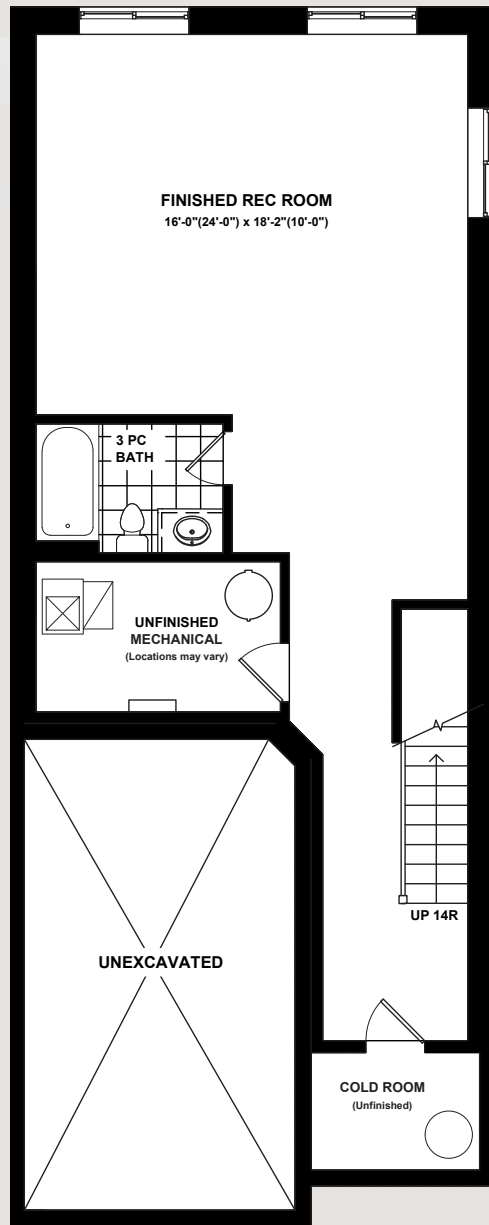


2.5 Bathrooms

 **DUNSIRE** | EST. 2010
DEVELOPMENTS

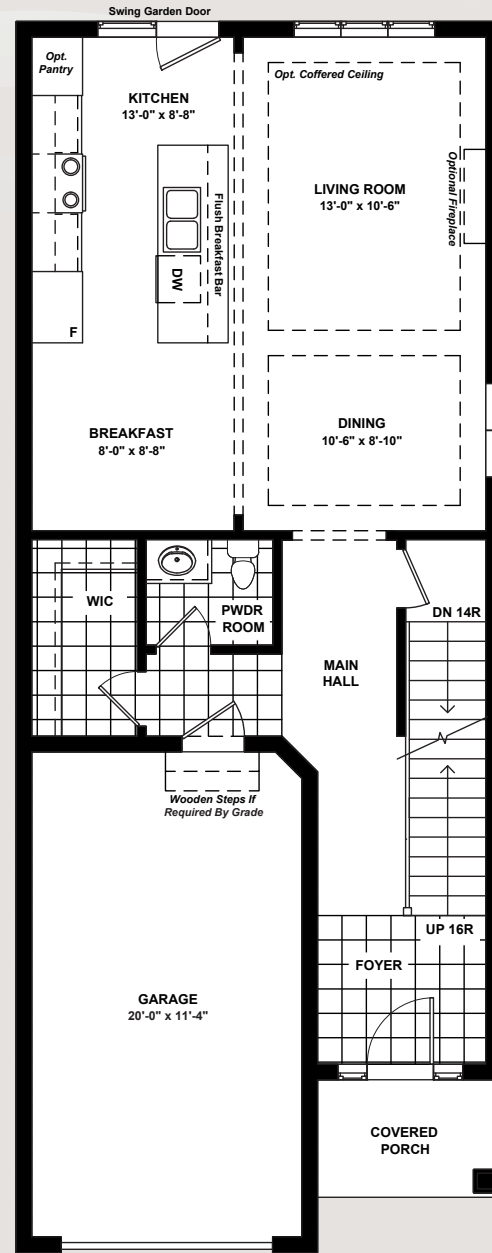
www.Dunsire.com

Actual usable floor space may vary from the stated floor area. Plans and elevations are artist's renderings and may contain options which are not standard on all models. Dunsire Homes Inc reserves the right to make changes to these floorplans, specifications, dimensions and elevations without prior notice and without compensation. Stated dimensions and square footages are approximate and should not be used as representation of the home's usable floor space or actual size. Any square footage of a single-family home or a multi-family home that is stated herein is approximate only, may vary from time to time, and remains subject to change without notice or compensation.



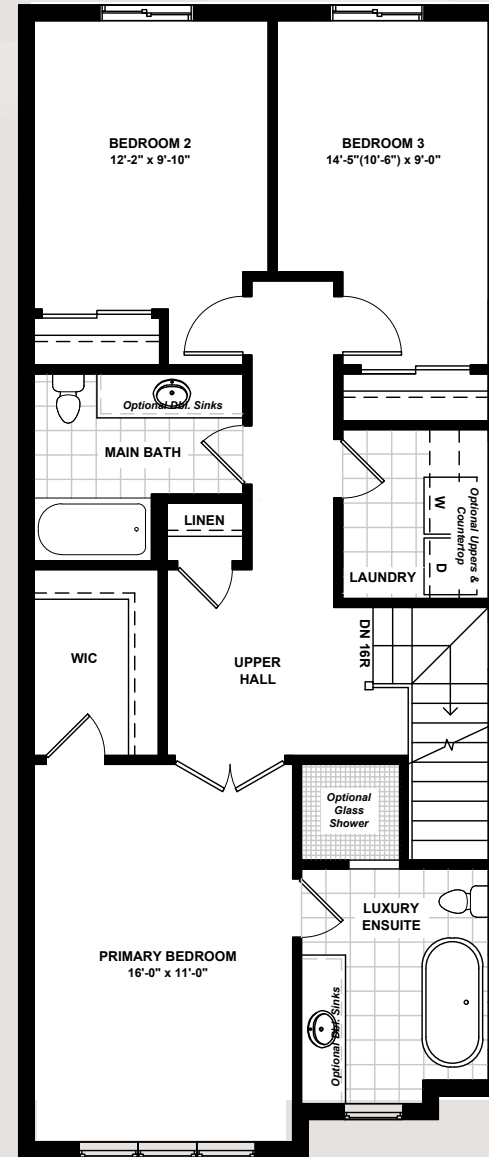
OPT. FINISHED BASEMENT

664 SQ.FT.



MAIN FLOOR WITH
OPT. FINISHED BASEMENT

679 SQ.FT.



SECOND FLOOR

982 SQ.FT.



MEADOW
HEIGHTS
PORT COLBORNE

CHESTNUT



2,325 Sq.Ft.



3 Bedrooms

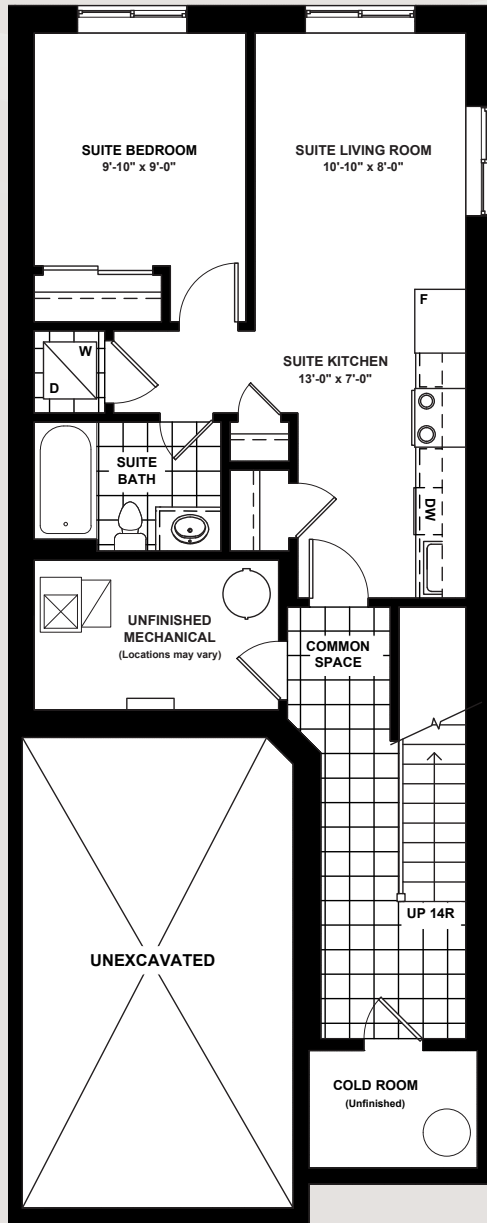


2.5+1 Bathrooms

 **DUNSIRE** | EST. 2010
DEVELOPMENTS

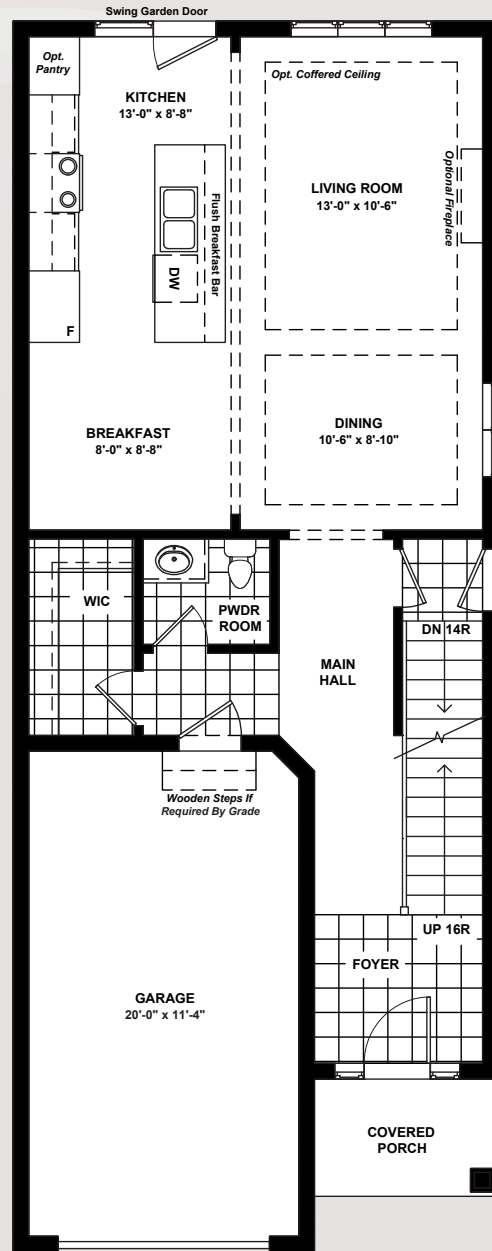
www.Dunsire.com

Actual usable floor space may vary from the stated floor area. Plans and elevations are artist's renderings and may contain options which are not standard on all models. Dunsire Homes Inc reserves the right to make changes to these floorplans, specifications, dimensions and elevations without prior notice and without compensation. Stated dimensions and square footages are approximate and should not be used as representation of the home's usable floor space or actual size. Any square footage of a single-family home or a multi-family home that is stated herein is approximate only, may vary from time to time, and remains subject to change without notice or compensation.



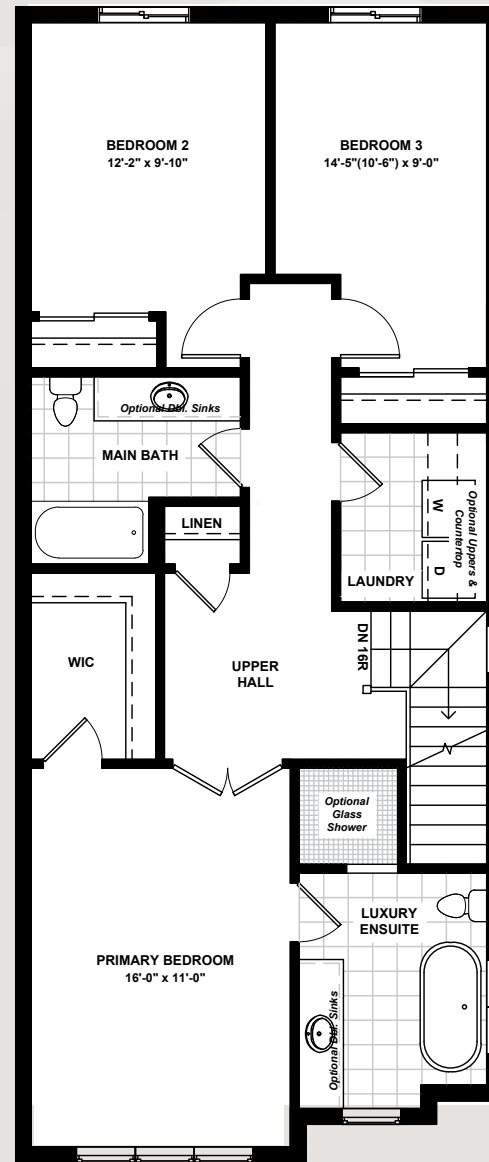
OPT. ADU 493 SQ.FT.

COMMON SPACE 171 SQ.FT.



OPT. MAIN FLOOR
WITH ADU ENTRY

679 SQ.FT.



SECOND FLOOR

982 SQ.FT.



MEADOW
HEIGHTS
PORT COLBORNE

CHESTNUT



2,325 Sq.Ft.



3+1 Bedrooms



2.5+1 Bathrooms

 **DUNSIRE** | EST. 2010
DEVELOPMENTS

www.Dunsire.com

Actual usable floor space may vary from the stated floor area. Plans and elevations are artist's renderings and may contain options which are not standard on all models. Dunsire Homes Inc reserves the right to make changes to these floorplans, specifications, dimensions and elevations without prior notice and without compensation. Stated dimensions and square footages are approximate and should not be used as representation of the home's usable floor space or actual size. Any square footage of a single-family home or a multi-family home that is stated herein is approximate only, may vary from time to time, and remains subject to change without notice or compensation.

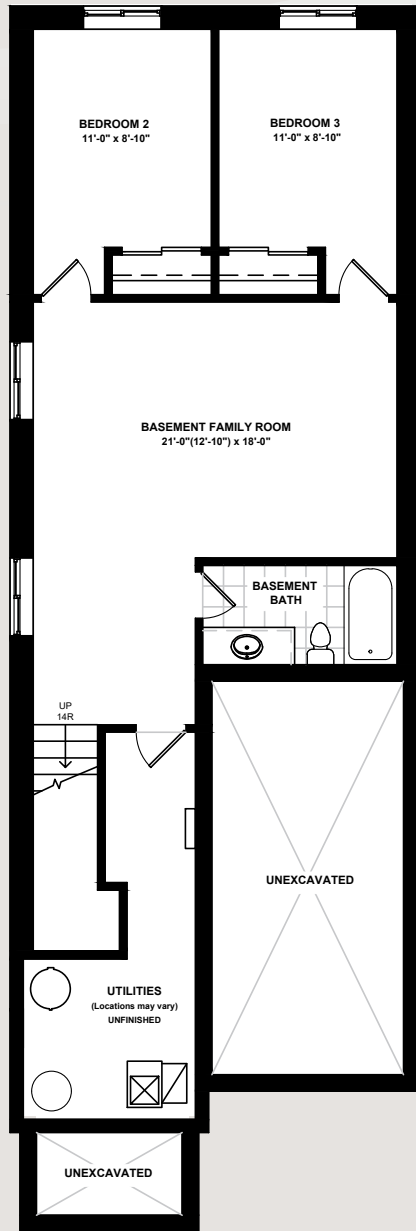


WALLFLOWER

This unit is displayed on the right of the render above. Actual usable floor space may vary from the stated floor area. Plans and elevations are artist's renderings and may contain options which are not standard on all models. Dunsire Homes Inc reserves the right to make changes to these floorplans, specifications, dimensions and elevations without prior notice and without compensation. Stated dimensions and square footages are approximate and should not be used as representation of the home's usable floor space or actual size. Any square footage of a single-family home or a multi-family home that is stated herein is approximate only, may vary from time to time, and remains subject to change without notice or compensation.



www.Dunsire.com



FINISHED BASEMENT

783 SQ.FT.



MAIN FLOOR

919 SQ.FT.



**MEADOW
HEIGHTS**
PORT COLBORNE

WALLFLOWER



1,702 Sq.Ft.



3 Bedrooms



2 Bathrooms

DUNSIRE | EST. 2010
DEVELOPMENTS

www.Dunsire.com

Actual usable floor space may vary from the stated floor area. Plans and elevations are artist's renderings and may contain options which are not standard on all models. Dunsire Homes Inc reserves the right to make changes to these floorplans, specifications, dimensions and elevations without prior notice and without compensation. Stated dimensions and square footages are approximate and should not be used as representation of the home's usable floor space or actual size. Any square footage of a single-family home or a multi-family home that is stated herein is approximate only, may vary from time to time, and remains subject to change without notice or compensation.